

## **STUDENT SATISFACTION SURVEY REPORT, 2022-2023**

### **ABOUT THE SURVEY:**

The students of an institution are the core stakeholders and every activity undertaken by the institute is focused on creating a barrier free and favorable environment to help them excel in their academics. This survey is modeled on the questionnaire recommended by NAAC. The questionnaire asks for feedback on a range of topics, including the classroom experience, the performance of administrative functions, and the quality of extracurricularthe institution offers. An online student satisfaction survey can be delivered in a variety of ways, but email is often the most effective method.

### **GUIDELINES FOR STUDENTS:**

- ▮ A student will have to respond to all the questions compulsorily with sincere effort and thought.
- ▮ Student identity will not be revealed.
- ▮ This survey is being conducted by A.N.R College, Gudivada with the aim to upgrade the quality in higher education.
- ▮ Each question has five options and the students are required to choose the most appropriate one.
- ▮ Students are required to give answers for the following questions:
  1. Please confirm this is the first and only time you answer this survey.  
a) Yes b) No
  2. Age:
  3. Branch /Department:
  4. Gender:  
a) Female b) Male c) Transgender
  5. What degree/program are you pursuing now?  
a) Bachelors b) Masters

## **SURVEY PROCESS:**

- ▮ The survey is conducted and reported by Internal Quality Assurance Cell (IQAC) with the support of Heads and Coordinators of all the Departments. The Questioners were prepared in the form of Google Form and circulated to all the Departments and then to Students through Coordinators.
- ▮ The feedback was taken on different attributes like; Basic Facilities, Basic Services, Co-curricular and Extracurricular Activities. The responses obtained on these dimensions are compiled into a Spread Sheet, analyzed and Logical Conclusions are drawn therefrom.
- ▮ The Questionnaire consisting of 21 questions is shared with the students and their responses are noted and analyzed graphically in terms of percentage. After analysis, results are analyzed by IQAC Team.
- ▮ The results of the survey will help the institution to understand both short term and long term needs of the students and initiate remedial action to improve the facilities wherever it is required. The outcome of this survey will provide a base for planning for the future.
- ▮ The IQAC sincerely thanks all the members of the Management, Principal, and Heads of the Departments & Staff, Coordinators of the Departments for permissions and implementation of the survey. IQAC conveys thanks to the students who have expressed their opinions and/or views sincerely.

## **QUESTIONS ASKED IN QUESTIONNAIRE:**

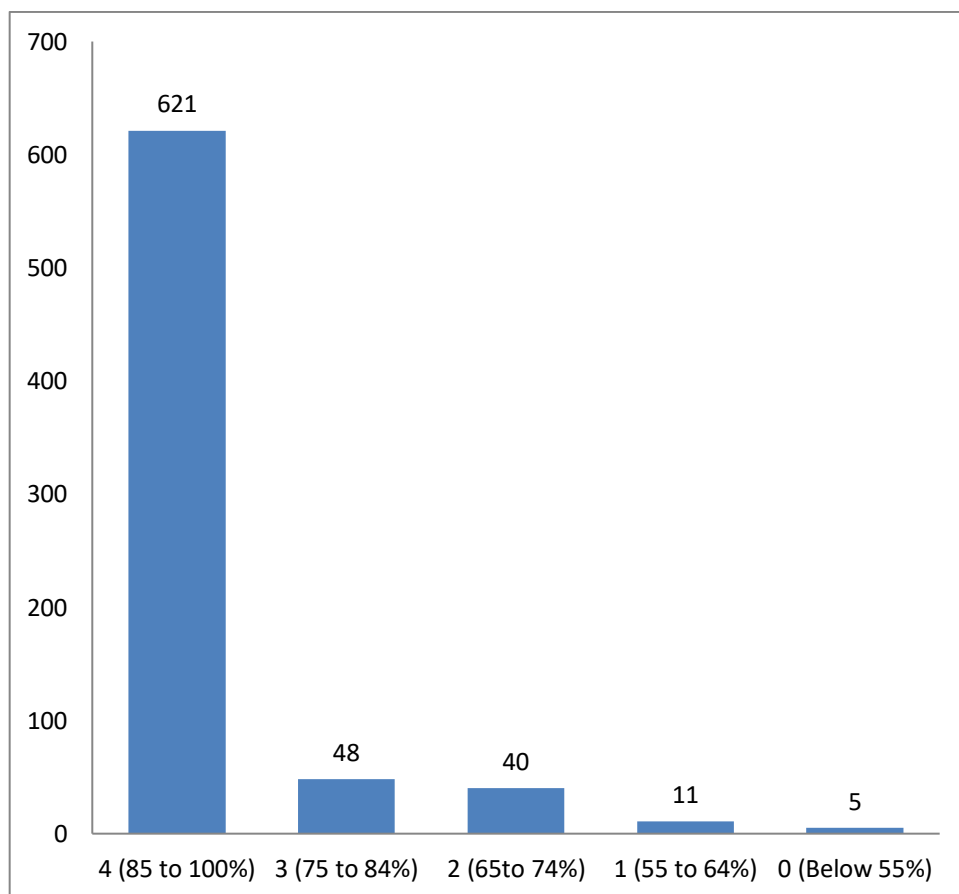
1. How much of the syllabus was covered in the class?
2. How well did the teachers prepare for the classes?
3. How well were the teachers able to communicate?
4. The Teacher's approach to teaching can best be described as
5. Fairness of the internal evaluation process by the teachers.

6. Was your performance in assignments discussed with you?
7. The institute takes active interest in promoting internship, student exchange, field visit opportunities for students.
8. The teaching and mentoring process in your institution facilitates you in cognitive, social and emotional growth.
9. The institution is providing multiple opportunities to learn and grow.
10. Teachers inform you about your expected competencies, course outcomes and programme outcomes.
11. Your mentor does a necessary follow-up with an assigned task given to you.
12. The teachers illustrate the concepts through examples and applications.
13. The teachers identify your strengths and encourage you by providing right level of challenges.
14. The teachers identify your weaknesses and help you to overcome them.
15. The institution makes effort to engage students in the monitoring, review and continuous quality improvement of the teaching learning process.
16. The institute/ teachers use student centric methods, such as experiential learning, participative learning and problem-solving methodologies for enhancing learning experiences.
17. Teachers encourage you to participate in extracurricular activities.
18. The efforts are made by the institute/ teachers to inculcate soft skills, life skills and employability skills to make you ready for the world of work.
19. What percentage of teachers use ICT Tools such as LCD Projector, Multimedia, etc. while teaching?
20. The overall quality of teaching-learning process in your institute is very good.
21. Give three observations/ suggestions to improve the overall teaching-learning experience in the class with reference to the teacher.

## ANALYSIS OF QUESTIONNAIRE:

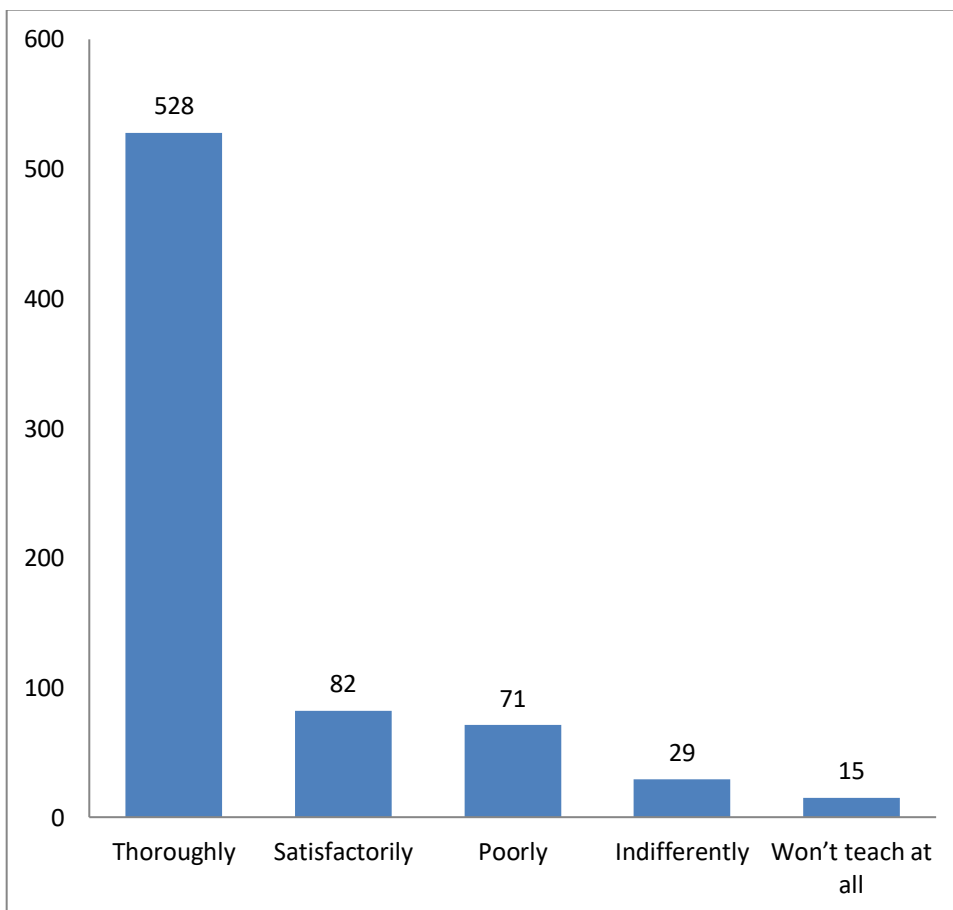
### 1. How much of the syllabus was covered in the class?

S.No	Opinion	No of Respondents
1	4 (85 to 100%)	522
2	3 (75 to 84%)	64
3	2 (65to 74%)	22
4	1 (55 to 64%)	18
5	0 (Below 55%)	9
	<b>Total</b>	<b>635</b>



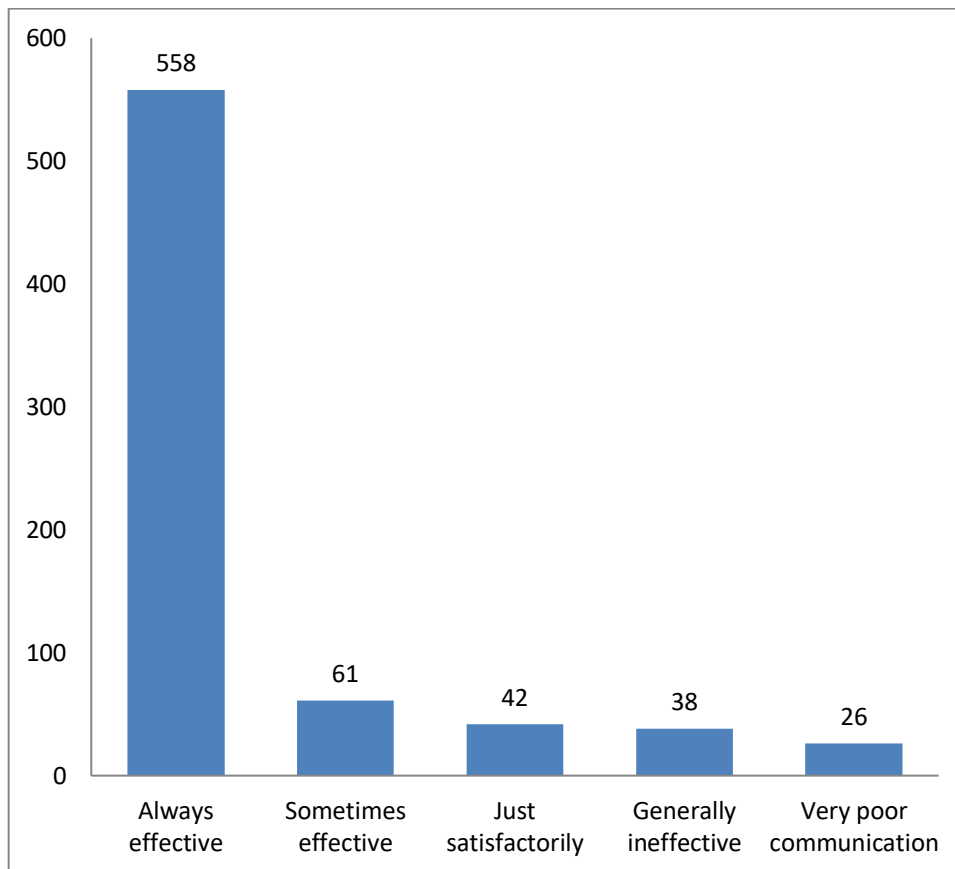
## 2. How well did the teachers prepare for the classes?

S.No	Opinion	No of Respondents
1	Excellent	556
2	Very good	39
3	Thoroughly	18
4	Satisfactorily	14
5	Not atisfactorily	8
	<b>Total</b>	<b>635</b>



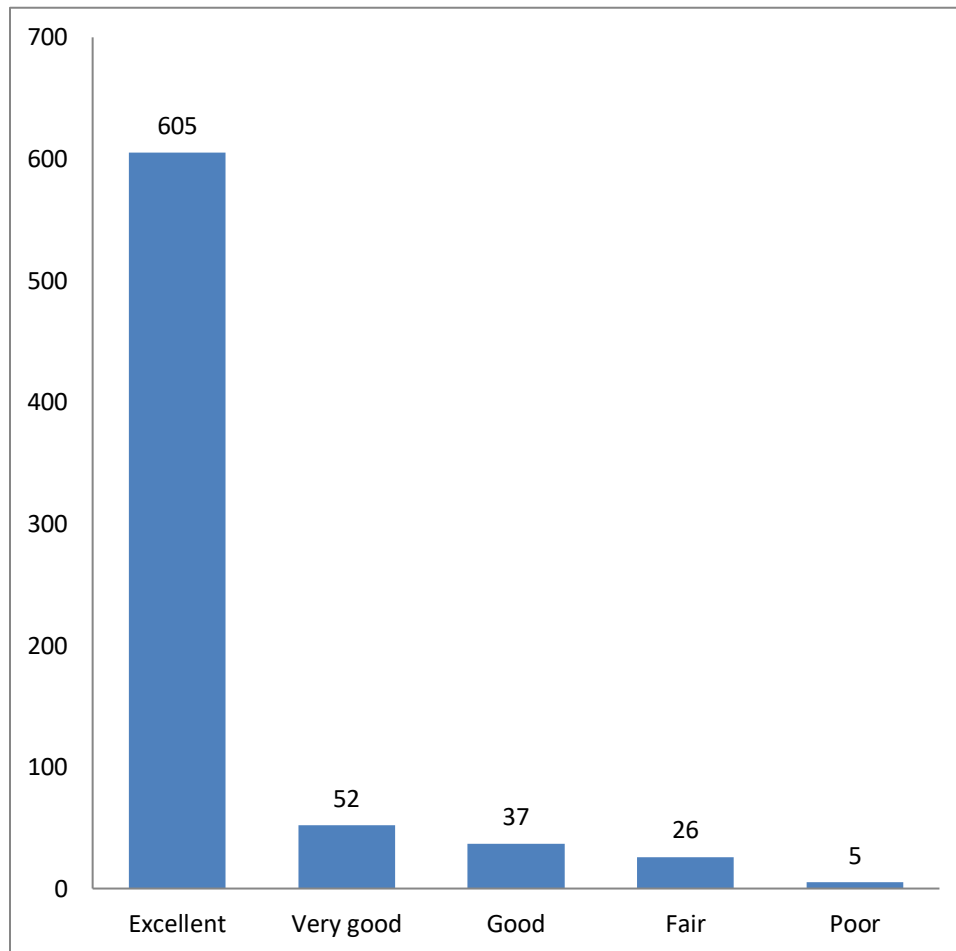
### 3. How well were the teachers able to communicate?

S.No	Opinion	No of Respondents
1	Very Well	509
2	Effectively	46
3	Average	30
4	Satisfactorily	29
5	Need improvement	21
	<b>Total</b>	<b>635</b>



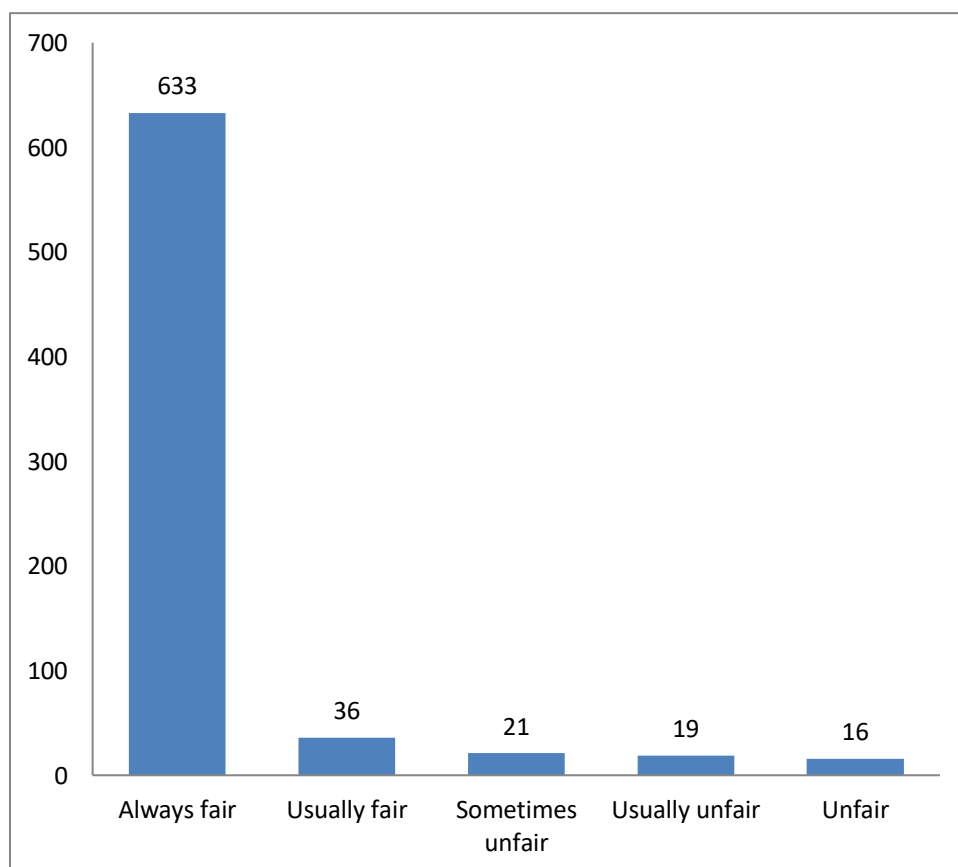
**4. The Teacher's approach to teaching can best be described as**

S.No	Opinion	No of Respondents
1	Excellent	494
2	Very good	86
3	Good	26
4	Fair	20
5	Poor	9
	<b>Total</b>	<b>635</b>



## 5. Fairness of the internal evaluation process by the teachers

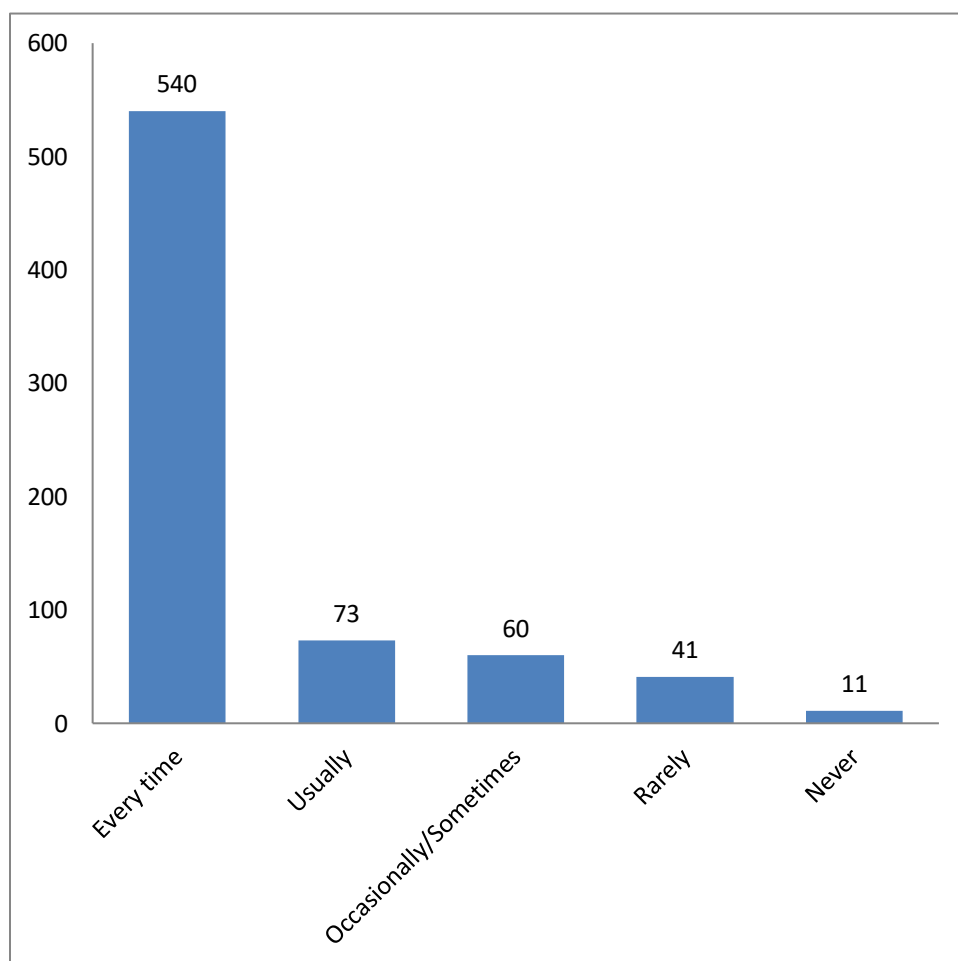
S.No	Opinion	No of Respondents
1	Good	566
2	Accurate	29
3	Fair	21
4	Satisfactorily	11
5	Not Satisfactorily	8
	<b>Total</b>	<b>635</b>





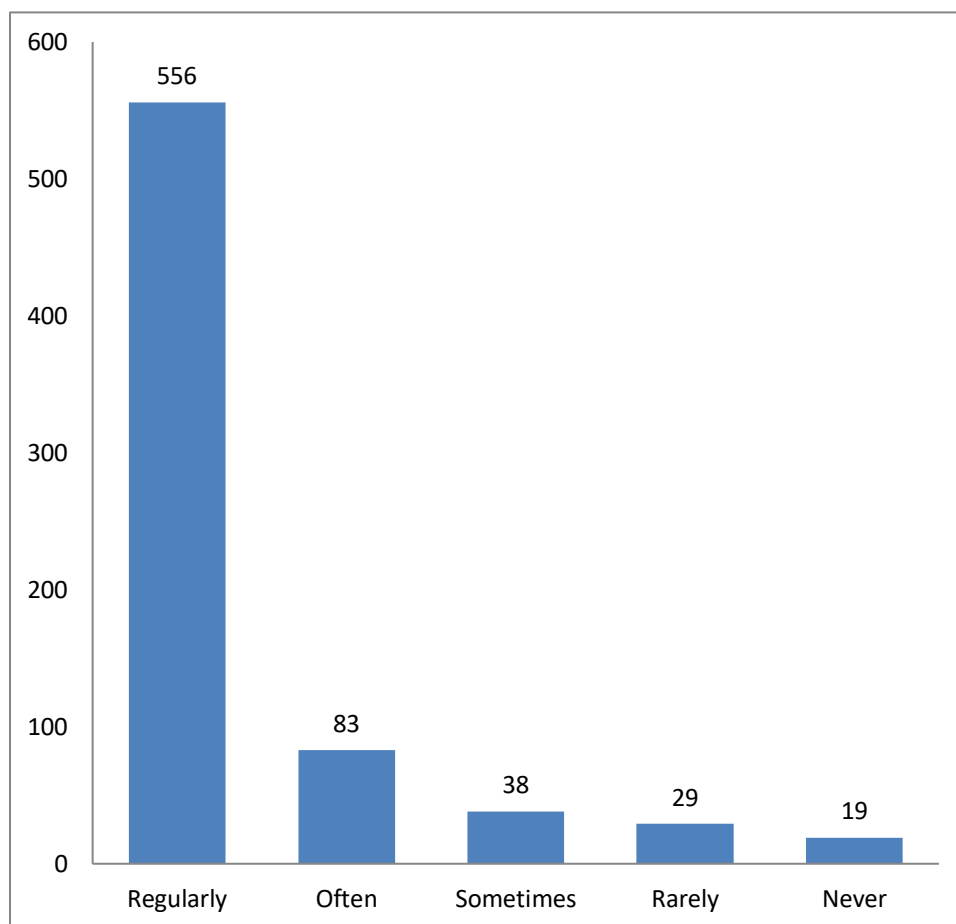
## 6. Was your performance in assignments discussed with you?

S.No	Opinion	No of Respondents
1	Every time	535
2	Usually	35
3	On need basis	28
4	Occasionally	26
5	Rarely	11
	<b>Total</b>	<b>635</b>



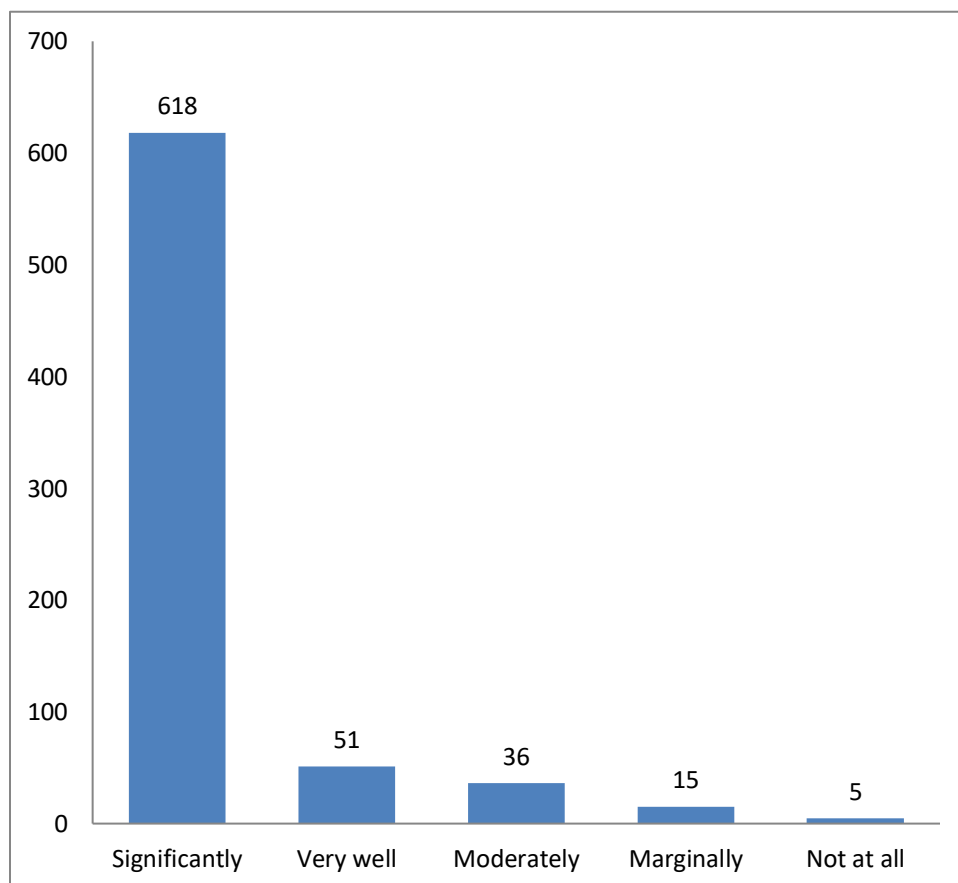
**7. The institute takes active interest in promoting internship, student exchange, field visit opportunities for students**

S.No	Opinion	No of Respondents
1	Regularly	474
2	Often	63
3	Most of the time	46
4	Sometimes	36
5	Never	16
	<b>Total</b>	<b>635</b>



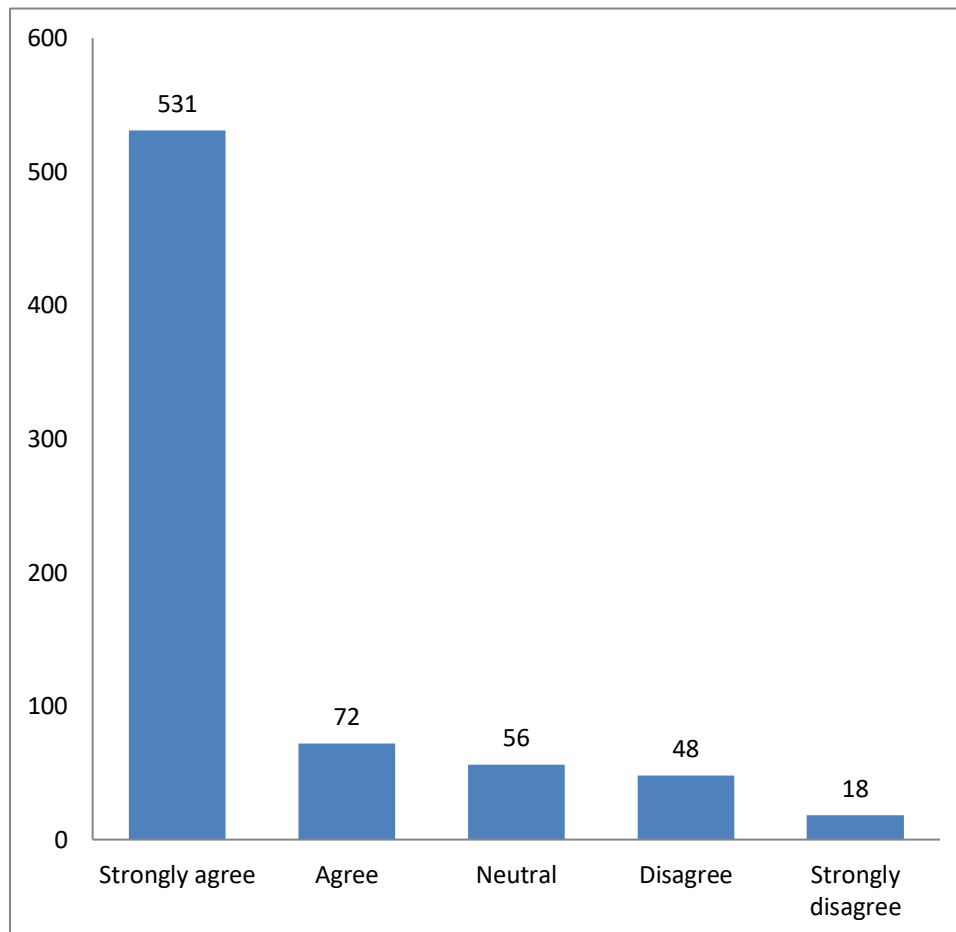
**8. The teaching and mentoring process in your institution facilitates you in cognitive, social and emotional growth**

S.No	Opinion	No of Respondents
1	Fully agree	518
2	Highly satisfactory	41
3	Satisfactory	36
4	Sometimes	26
5	Needs improvement	14
	<b>Total</b>	<b>635</b>



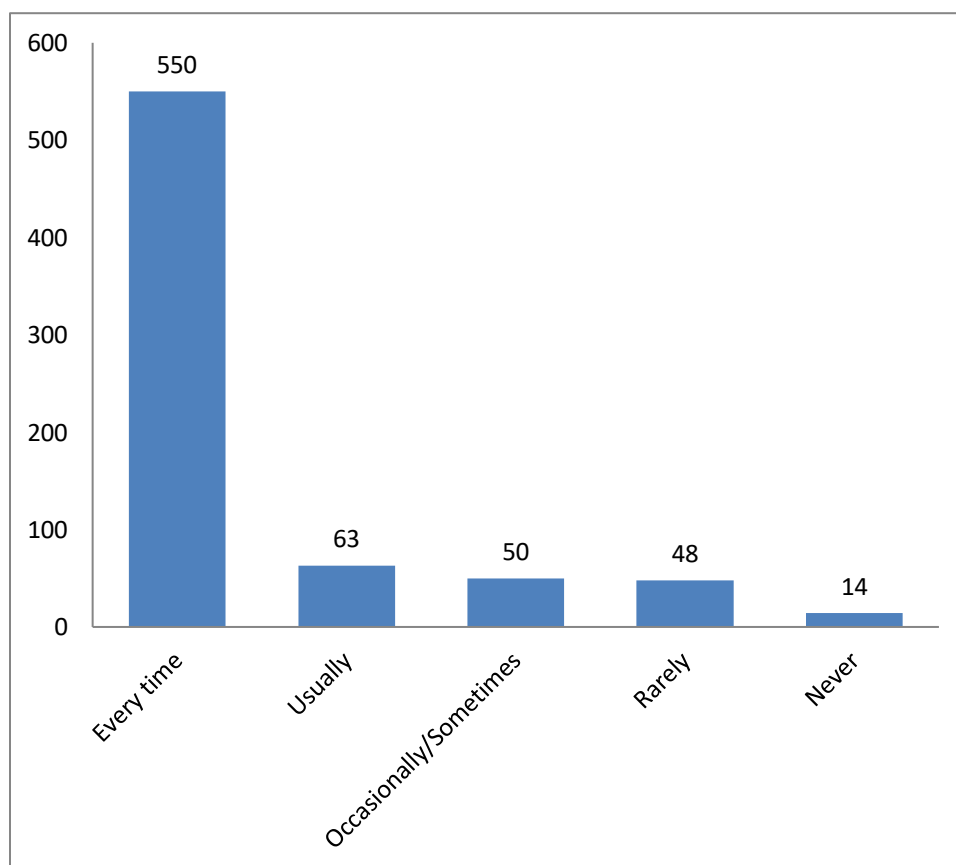
**9. The institution is providing multiple opportunities to learn and grow**

S.No	Opinion	No of Respondents
1	Very good	526
2	Strongly agree	63
3	Agree	22
4	Neutral	15
5	Disagree	9
	<b>Total</b>	<b>635</b>



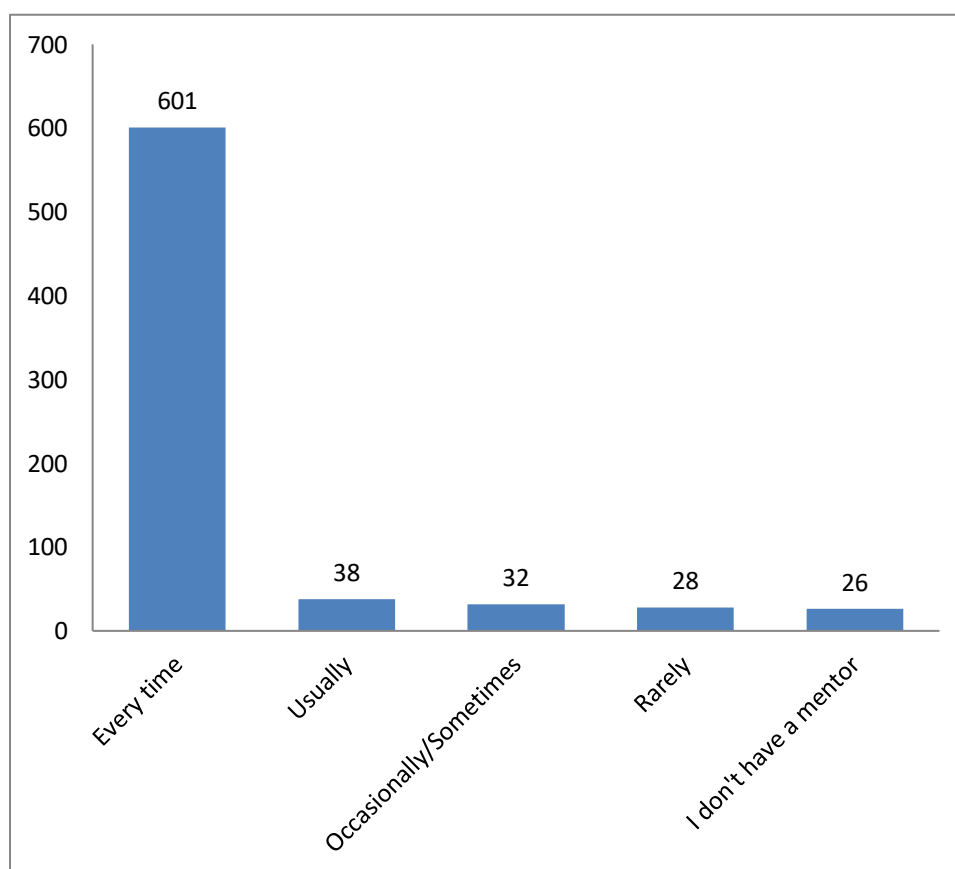
**10. Teachers inform you about your expected competencies, course outcomes and programme outcomes**

S.No	Opinion	No of Respondents
1	Every time	559
2	As per context	35
3	Occasionally	18
4	Sometimes	14
5	Rarely	9
	<b>Total</b>	<b>635</b>



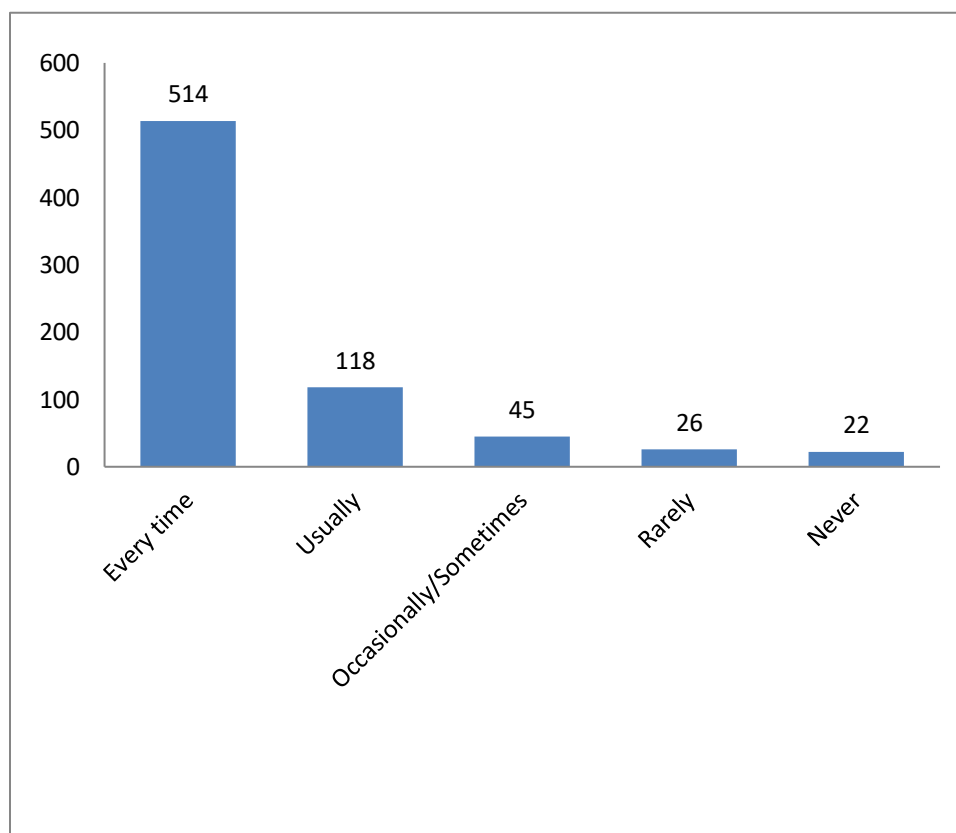
**11. Your mentor does a necessary follow-up with an assigned task given to you.**

S.No	Opinion	No of Respondents
1	Every time	476
2	On a regular basis	95
3	Occasionally	28
4	Sometimes	20
5	Rarely	16
	<b>Total</b>	<b>635</b>



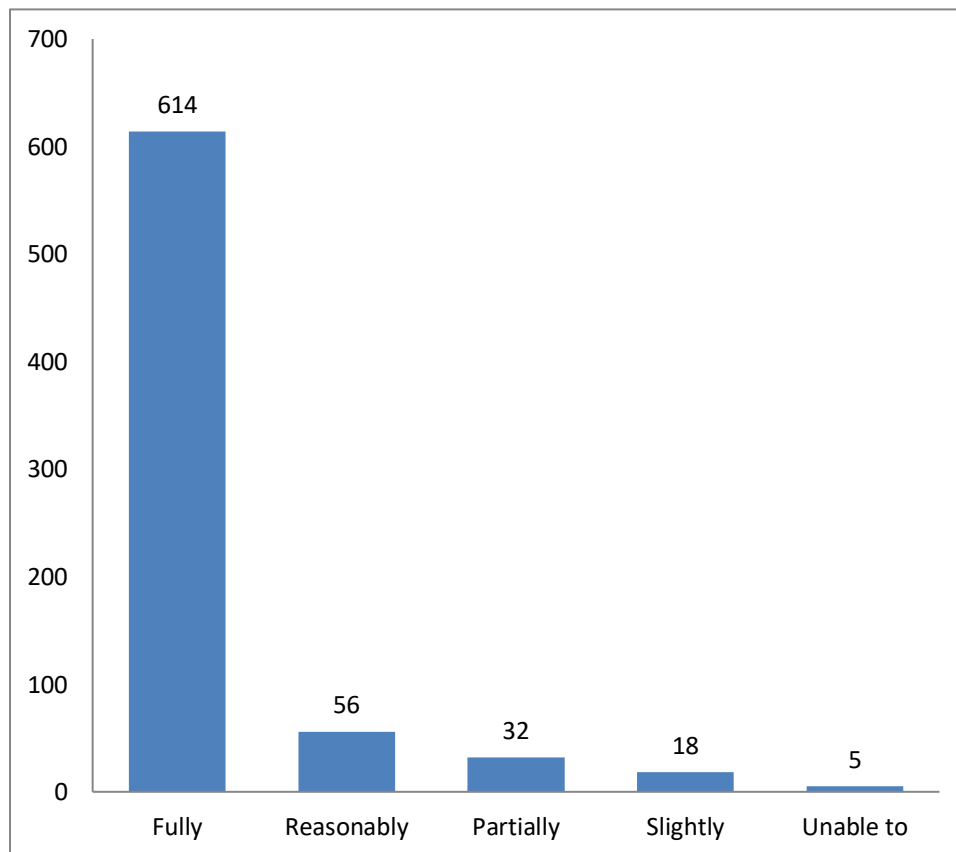
## 12. The teachers illustrate the concepts through examples and applications

S.No	Opinion	No of Respondents
1	Every time	514
2	Usually	46
3	Sometimes	36
4	Occasionally	25
5	Never	14
	<b>Total</b>	<b>635</b>



**13.The teachers identifying your strengths and encouraging you by providing right level of challenges**

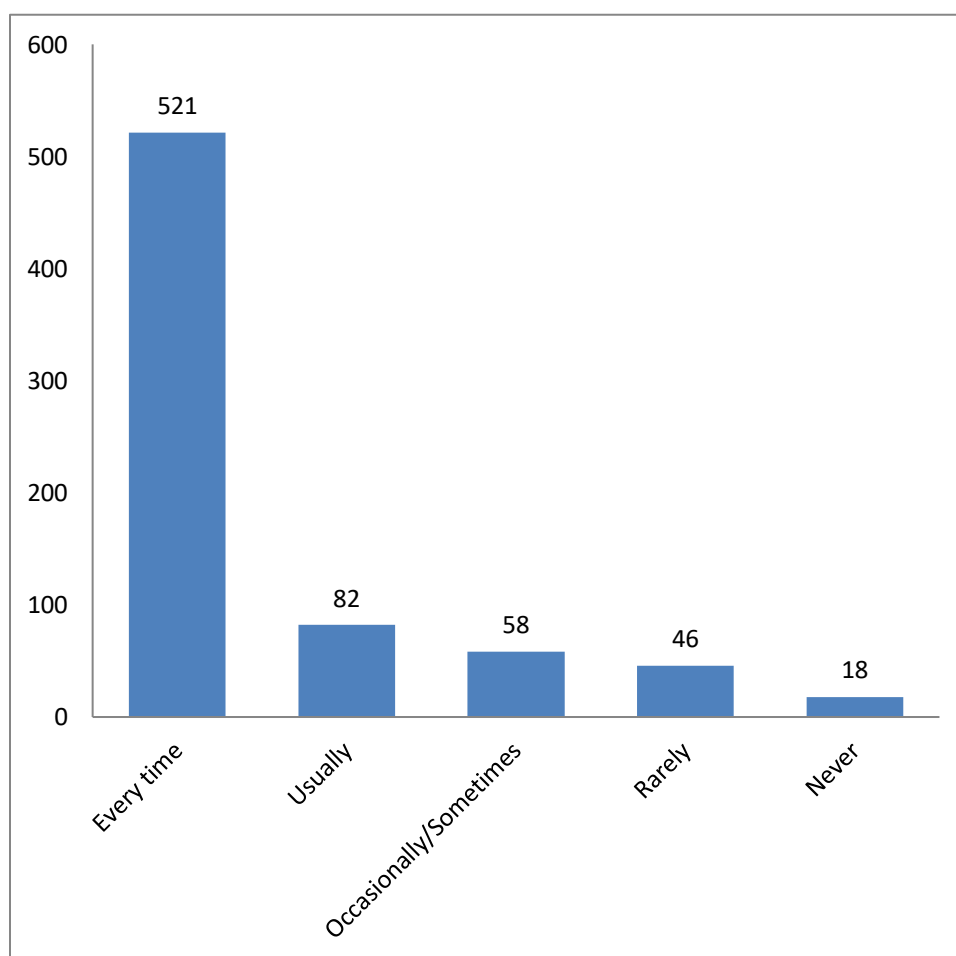
S.No	Opinion	No of Respondents
1	Fully	479
2	Reasonably well	68
3	Most of the times	41
4	Slightly	26
5	Never	21
	<b>Total</b>	<b>635</b>





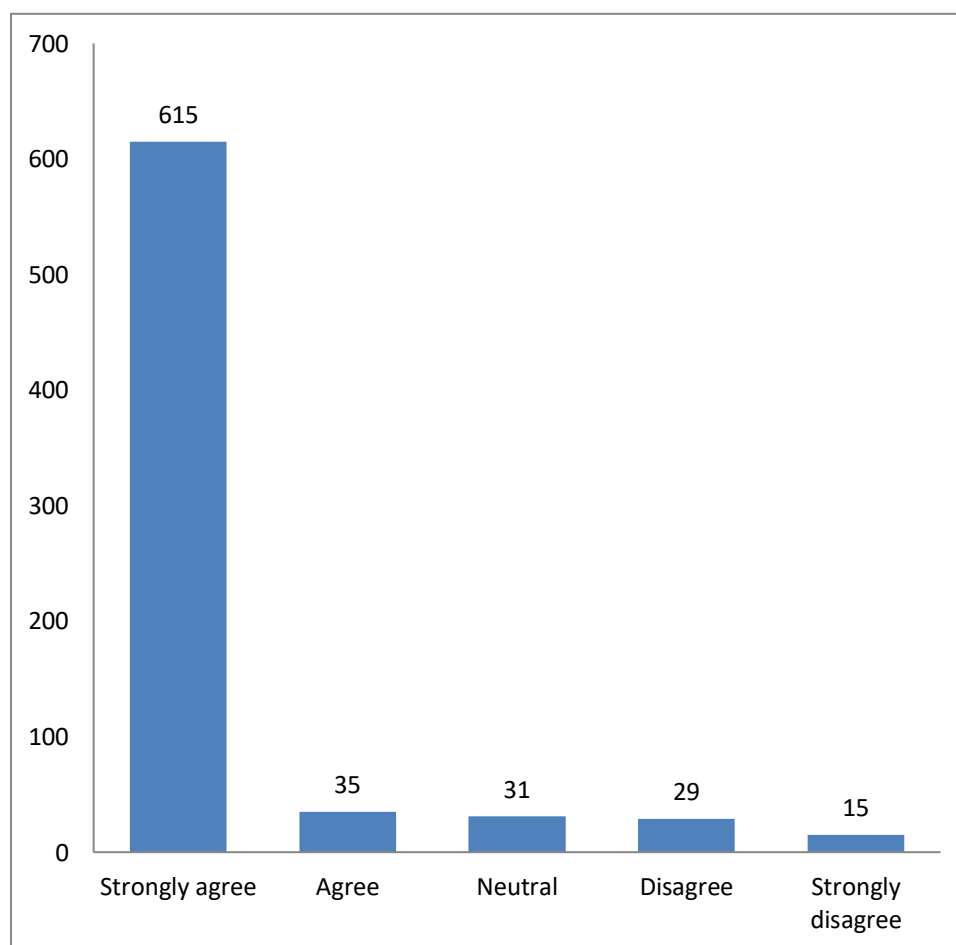
#### 14.The teachers identify your weaknesses and help you to overcome them

S.No	Opinion	No of Respondents
1	Every time	518
2	Usually	41
3	On need basis	35
4	Sometimes	26
5	Never	15
	<b>Total</b>	<b>635</b>



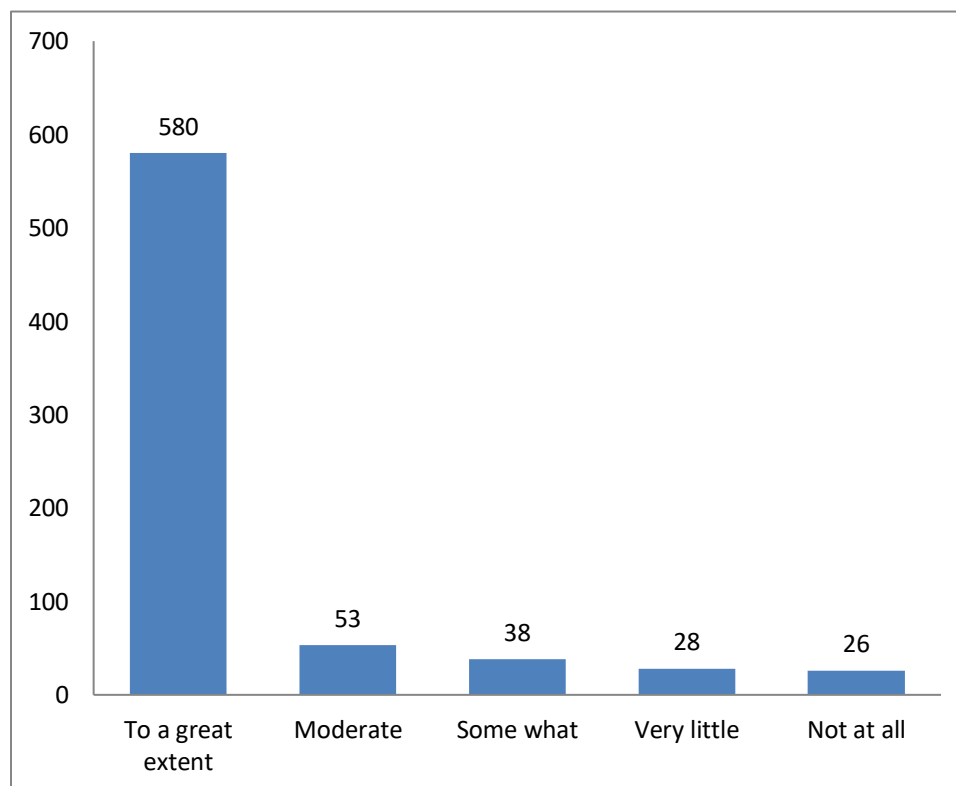
**15. The institution makes effort to engage students in the monitoring, review and continuous quality improvement of the teaching learning process**

S.No	Opinion	No of Respondents
1	Strongly agree	488
2	Agree	76
3	Satisfactorily	36
4	Needs more attention	26
5	Disagree	9
	<b>Total</b>	<b>635</b>



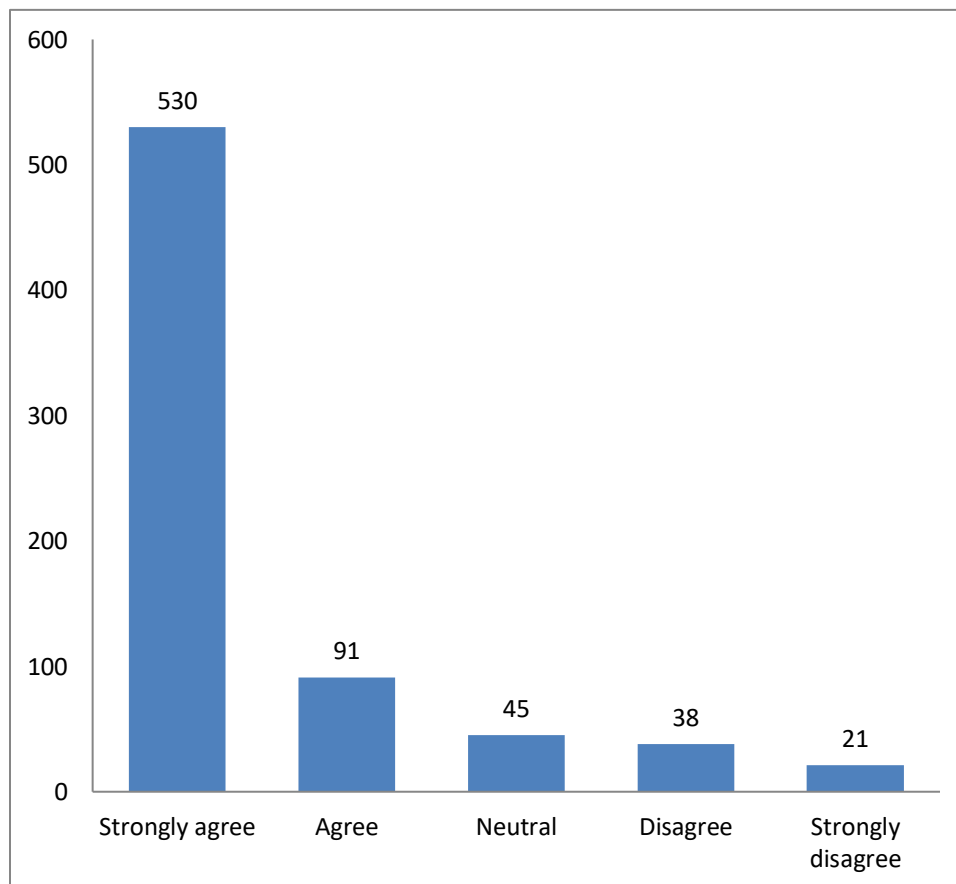
**16. The institute/ teachers use student centric methods, such as experiential learning, participative learning and problem solving methodologies for enhancing learning experiences**

S.No	Opinion	No of Respondents
1	Always	515
2	To a great extent	40
3	Most of the time	36
4	On need basis	28
5	Not at all	16
	<b>Total</b>	<b>635</b>



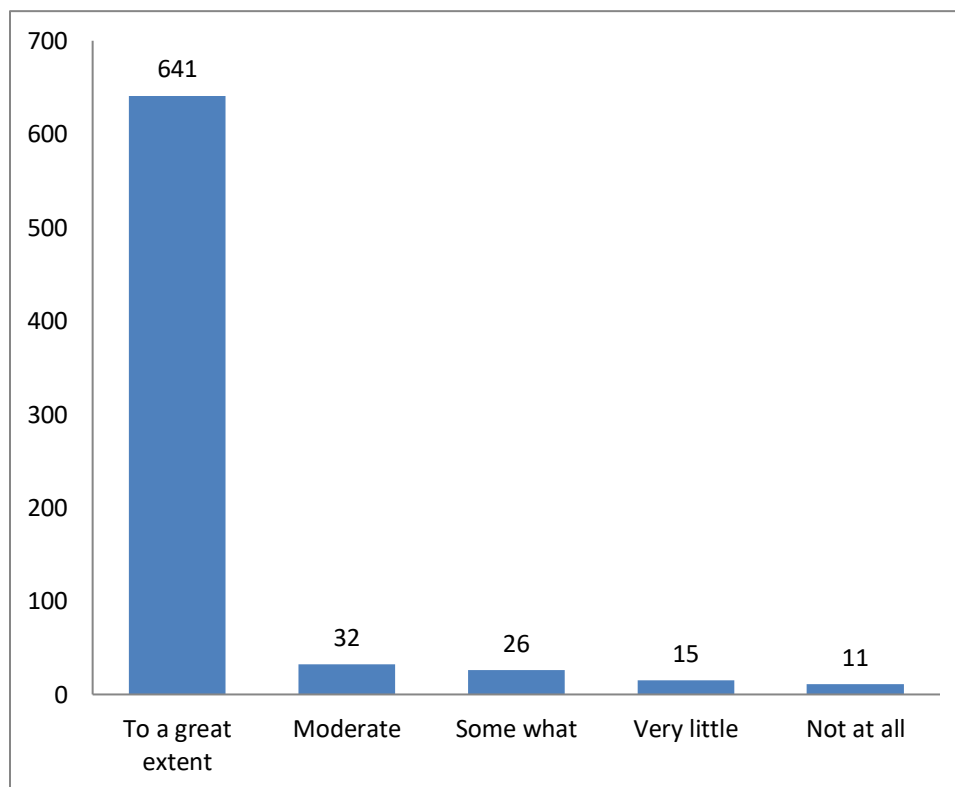
### 17. Teachers encourage you to participate in extracurricular activities

S.No	Opinion	No of Respondents
1	Strongly agree	470
2	Agree	81
3	Neutral	41
4	Disagree	28
5	Strongly disagree	15
	<b>Total</b>	<b>635</b>



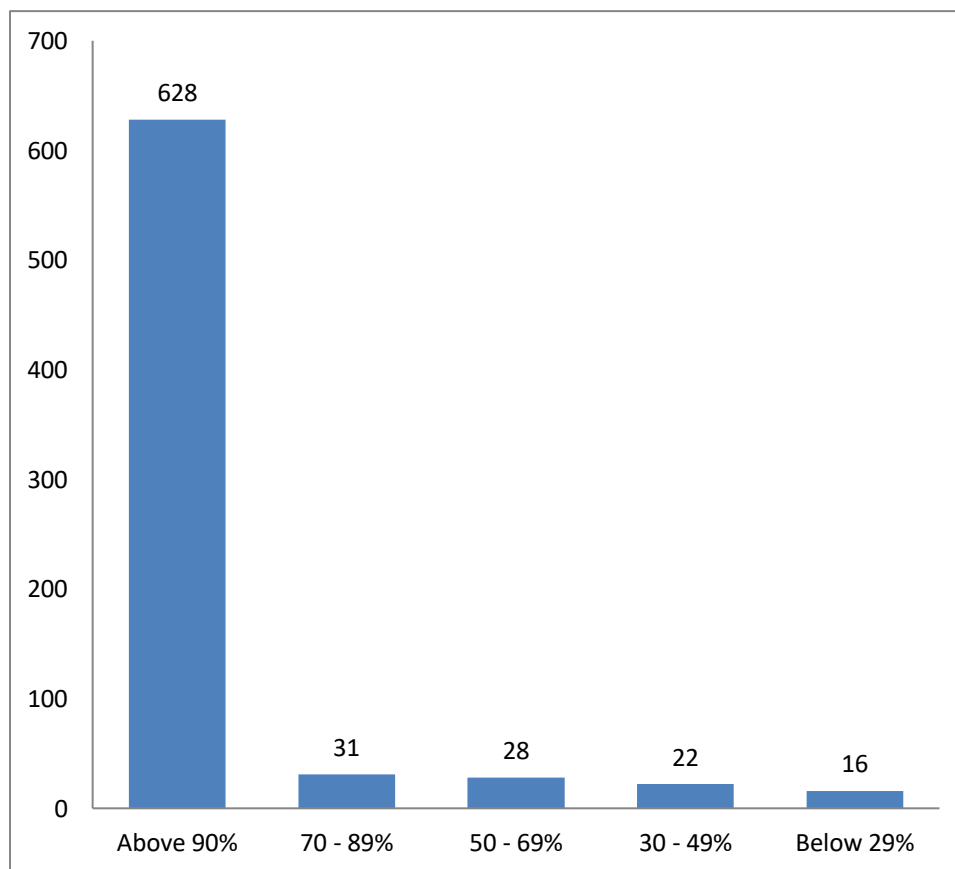
**18. The efforts are made by the institute/ teachers to inculcate soft skills, life skills and employability skills to make you ready for the world of work**

S.No	Opinion	No of Respondents
1	Fully agree	506
2	Agree	46
3	To some extent	43
4	Very moderate	29
5	Not at all	11
	<b>Total</b>	<b>635</b>



**19. What percentage of teachers use ICT Tools such as LCD Projector, Multimedia, etc. while teaching?**

S.No	Opinion	No of Respondents
1	Above 90%	514
2	70 - 89%	45
3	50 - 69%	35
4	30 - 49%	26
5	Below 29%	15
	<b>Total</b>	<b>635</b>



**20. The overall quality of teaching-learning process in your institute is verygood**

S.No	Opinion	No of Respondents
1	Strongly agree	496
2	Agree	63
3	Satisfactorily	30
4	Neutral	25
5	Disagree	21
	<b>Total</b>	<b>635</b>

