

STUDENT SATISFACTION SURVEY REPORT, 2021-2022

ABOUT THE SURVEY:

The students of an institution are the core stakeholders and every activity undertaken by the institute is focused on creating a barrier free and favorable environment to help them excel in their academics. This survey is modeled on the questionnaire recommended by NAAC. The questionnaire asks for feedback on a range of topics, including the classroom experience, the performance of administrative functions, and the quality of extracurricularthe institution offers. An online student satisfaction survey can be delivered in a variety of ways, but email is often the most effective method.

GUIDELINES FOR STUDENTS:

- A student will have to respond to all the questions compulsorily with sincere effort and thought.
- Student identity will not be revealed.
- This survey is being conducted by A.N.R College, Gudivada with the aim to upgrade the quality in higher education.
- Each question has five options and the students are required to choose the most appropriate one.
- Students are required to give answers for the following questions:
 1. Please confirm this is the first and only time you answer this survey.
a) Yes b) No
 2. Age:
 3. Branch /Department:
 4. Gender:
a) Female b) Male c) Transgender
 5. What degree/program are you pursuing now?
a) Bachelors b) Masters

SURVEY PROCESS:

- The survey is conducted and reported by Internal Quality Assurance Cell (IQAC) with the support of Heads and Coordinators of all the Departments. The Questioners were prepared in the form of Google Form and circulated to all the Departments and then to Students through Coordinators.
- The feedback was taken on different attributes like; Basic Facilities, Basic Services, Co-curricular and Extracurricular Activities. The responses obtained on these dimensions are compiled into a Spread Sheet, analyzed and Logical Conclusions are drawn therefrom.
- The Questionnaire consisting of 21 questions is shared with the students and their responses are noted and analyzed graphically in terms of percentage. After analysis, results are analyzed by IQAC Team.
- The results of the survey will help the institution to understand both short term and long term needs of the students and initiate remedial action to improve the facilities wherever it is required. The outcome of this survey will provide a base for planning for the future.
- The IQAC sincerely thanks all the members of the Management, Principal, and Heads of the Departments & Staff, Coordinators of the Departments for permissions and implementation of the survey. IQAC conveys thanks to the students who have expressed their opinions and/or views sincerely.

QUESTIONS ASKED IN QUESTIONNAIRE:

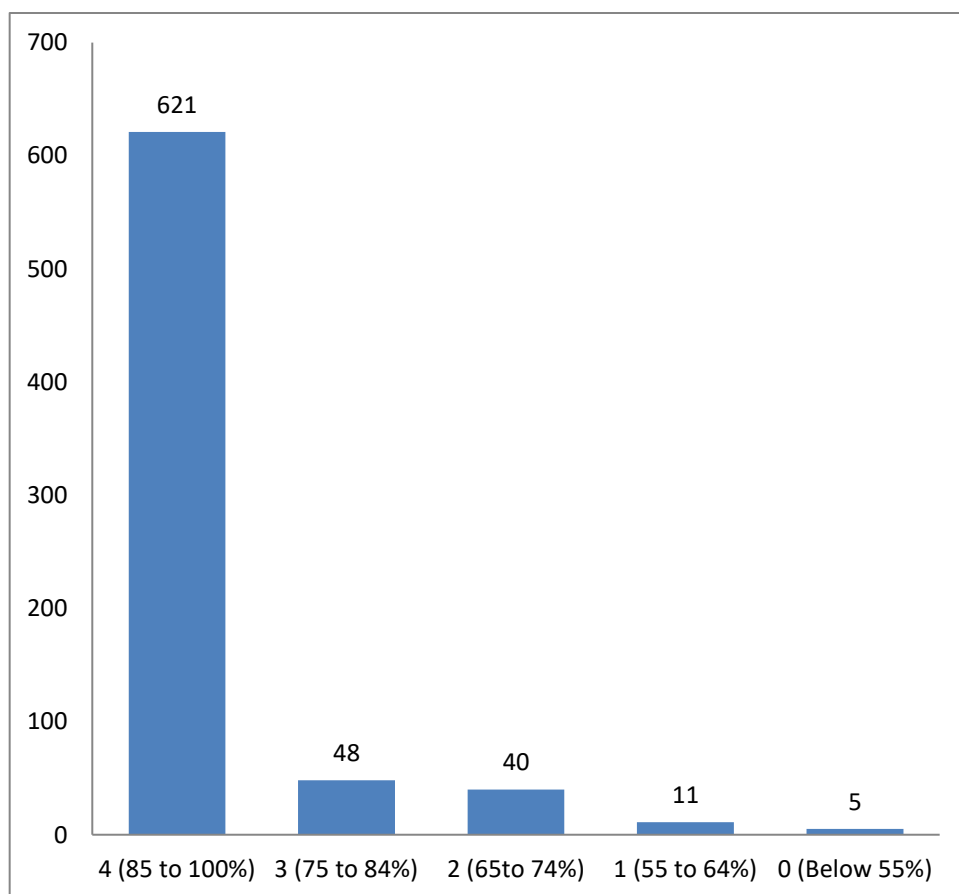
1. How much of the syllabus was covered in the class?
2. How well did the teachers prepare for the classes?
3. How well were the teachers able to communicate?
4. The Teacher's approach to teaching can best be described as
5. Fairness of the internal evaluation process by the teachers.

6. Was your performance in assignments discussed with you?
7. The institute takes active interest in promoting internship, student exchange, field visit opportunities for students.
8. The teaching and mentoring process in your institution facilitates you in cognitive, social and emotional growth.
9. The institution is providing multiple opportunities to learn and grow.
10. Teachers inform you about your expected competencies, course outcomes and programme outcomes.
11. Your mentor does a necessary follow-up with an assigned task given to you.
12. The teachers illustrate the concepts through examples and applications.
13. The teachers identify your strengths and encourage you by providing right level of challenges.
14. The teachers identify your weaknesses and help you to overcome them.
15. The institution makes effort to engage students in the monitoring, review and continuous quality improvement of the teaching learning process.
16. The institute/ teachers use student centric methods, such as experiential learning, participative learning and problem-solving methodologies for enhancing learning experiences.
17. Teachers encourage you to participate in extracurricular activities.
18. The efforts are made by the institute/ teachers to inculcate soft skills, life skills and employability skills to make you ready for the world of work.
19. What percentage of teachers use ICT Tools such as LCD Projector, Multimedia, etc. while teaching?
20. The overall quality of teaching-learning process in your institute is very good.
21. Give three observations/ suggestions to improve the overall teaching-learning experience in the class with reference to the teacher.

ANALYSIS OF QUESTIONNAIRE:

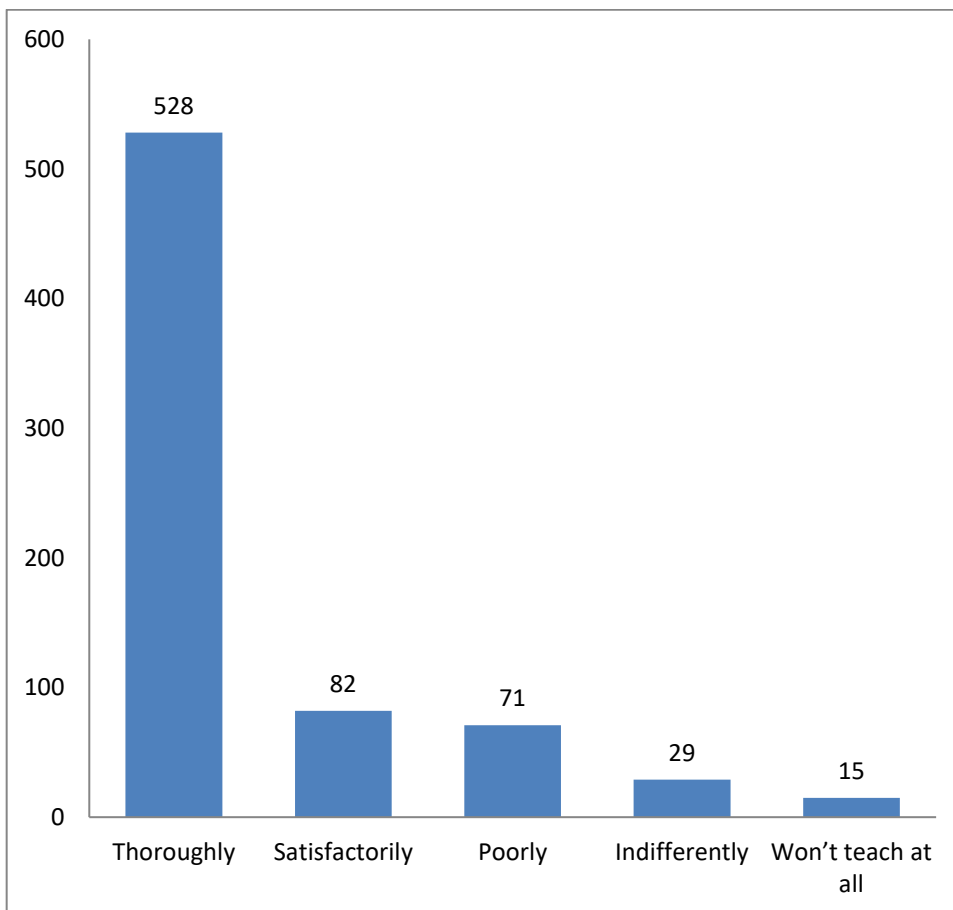
1. How much of the syllabus was covered in the class?

S.No	Opinion	No of Respondents
1	4 (85 to 100%)	559
2	3 (75 to 84%)	95
3	2 (65to 74%)	76
4	1 (55 to 64%)	56
5	0 (Below 55%)	40
	Total	826



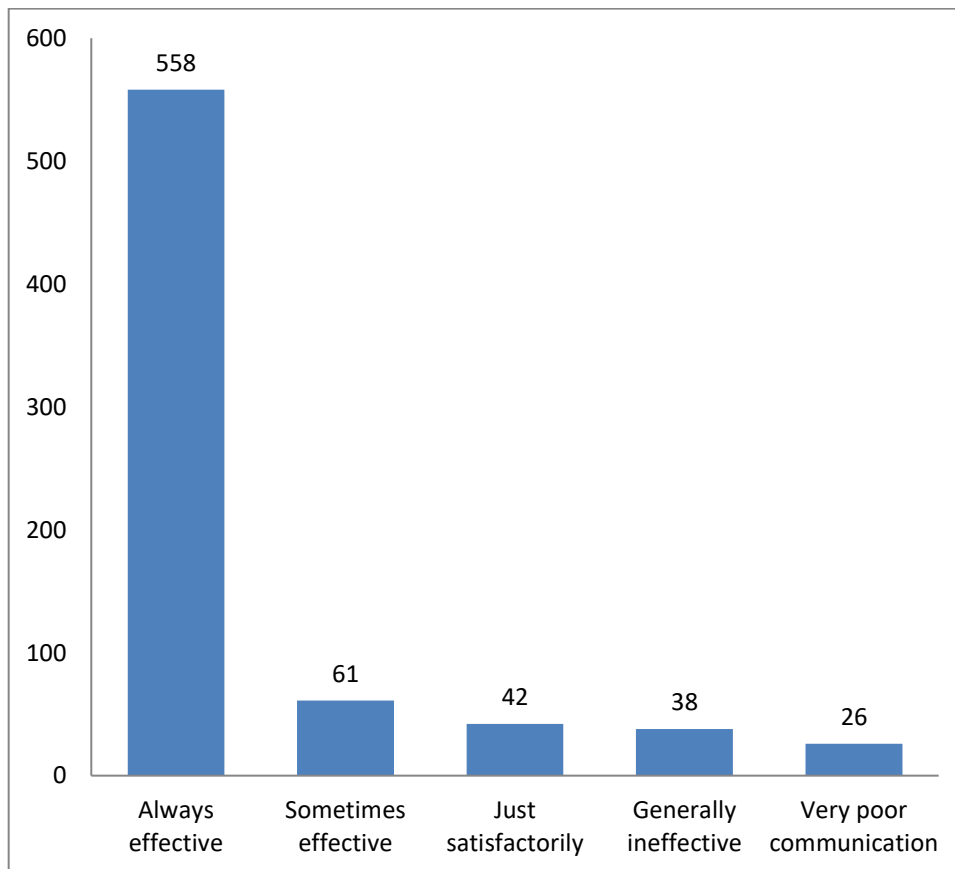
2. How well did the teachers prepare for the classes?

S.No	Opinion	No of Respondents
1	Excellent	528
2	Very good	186
3	Thoroughly	59
4	Satisfactorily	42
5	Not atisfactorily	11
	Total	826



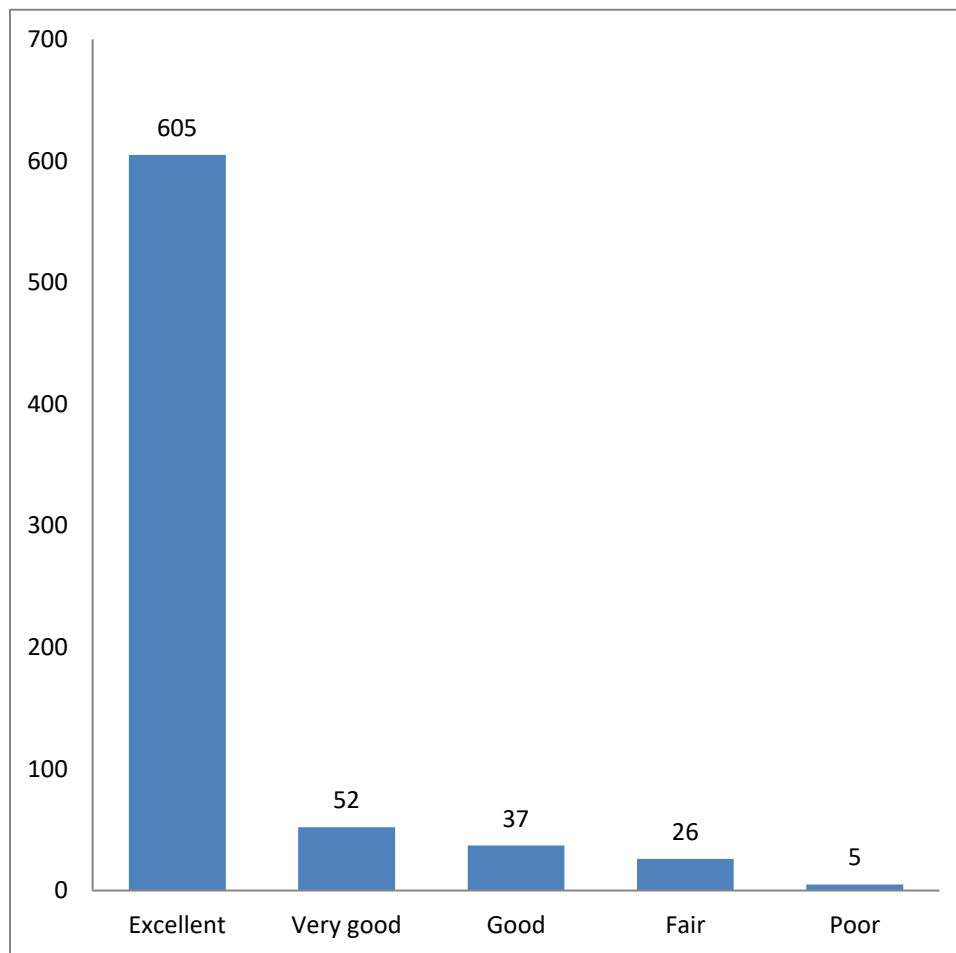
3. How well were the teachers able to communicate?

S.No	Opinion	No of Respondents
1	Very Well	635
2	Effectively	83
3	Average	55
4	Satisfactorily	42
5	Need improvement	11
	Total	826



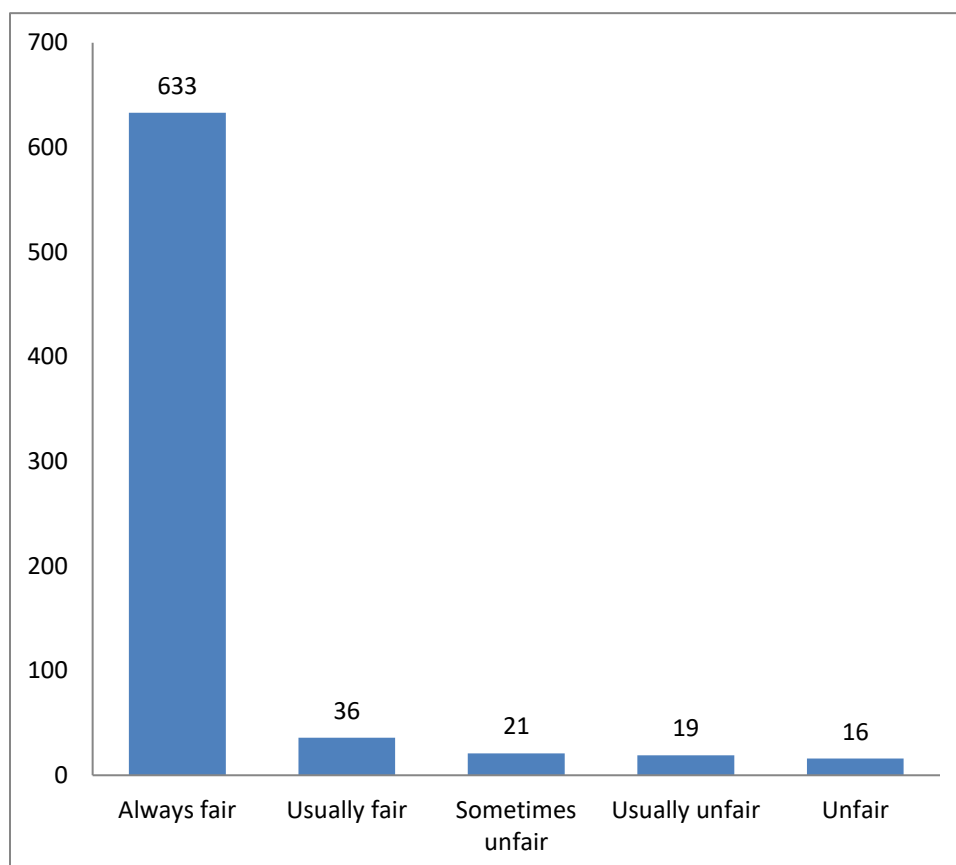
4. The Teacher's approach to teaching can best be described as

S.No	Opinion	No of Respondents
1	Excellent	432
2	Very good	176
3	Good	161
4	Fair	36
5	Poor	21
	Total	826



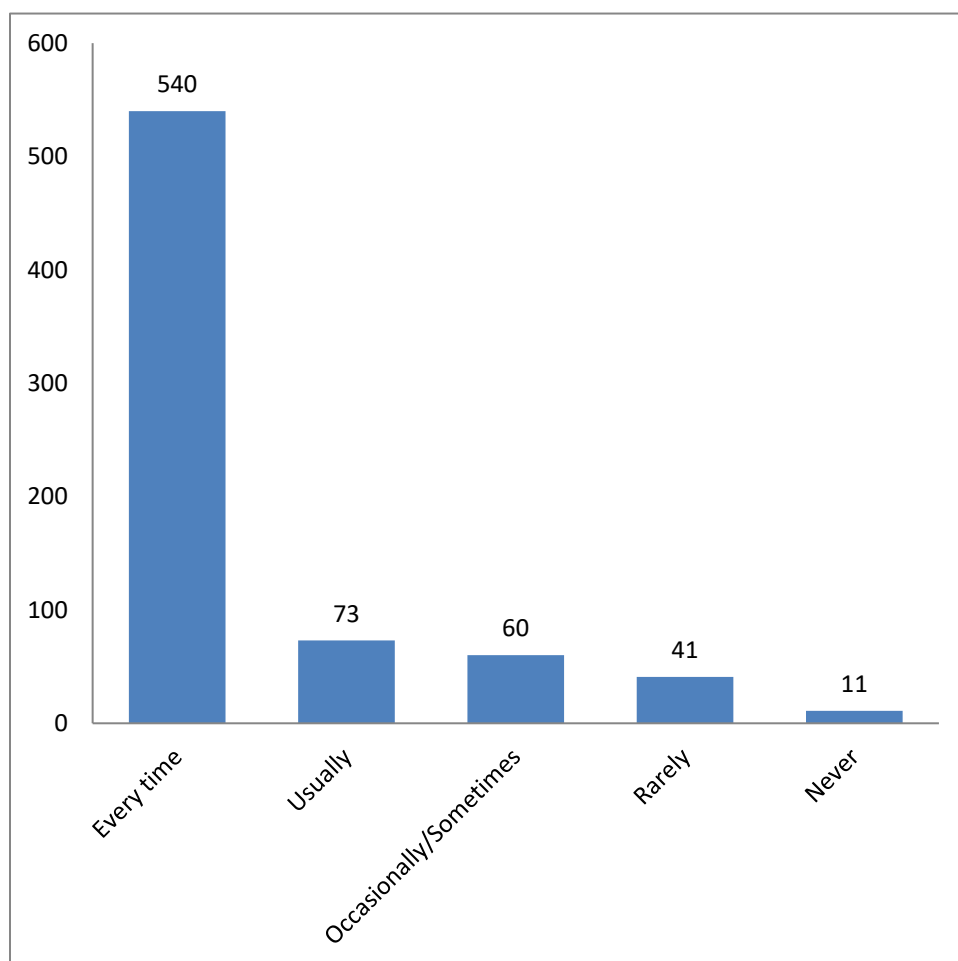
5. Fairness of the internal evaluation process by the teachers

S.No	Opinion	No of Respondents
1	Good	583
2	Accurate	86
3	Fair	78
4	Satisfactorily	48
5	Not Satisfactorily	31
	Total	826



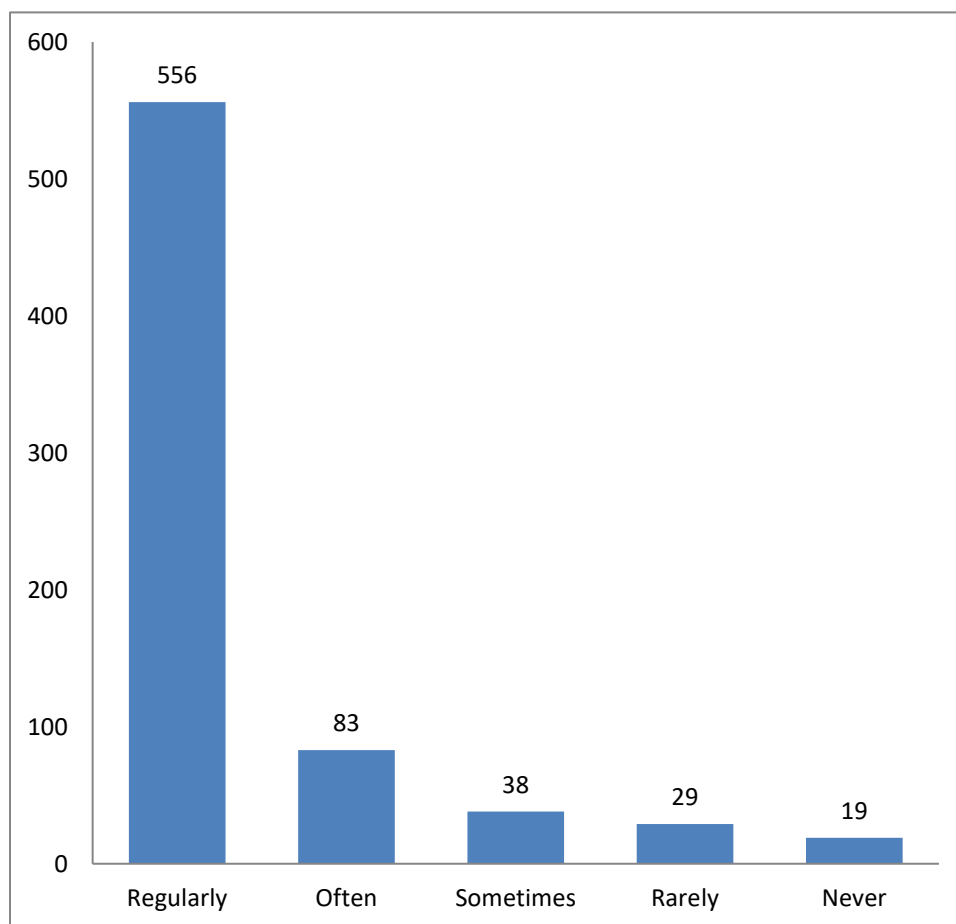
6. Was your performance in assignments discussed with you?

S.No	Opinion	No of Respondents
1	Every time	511
2	Usually	93
3	On need basis	82
4	Occasionally	79
5	Rarely	61
	Total	826



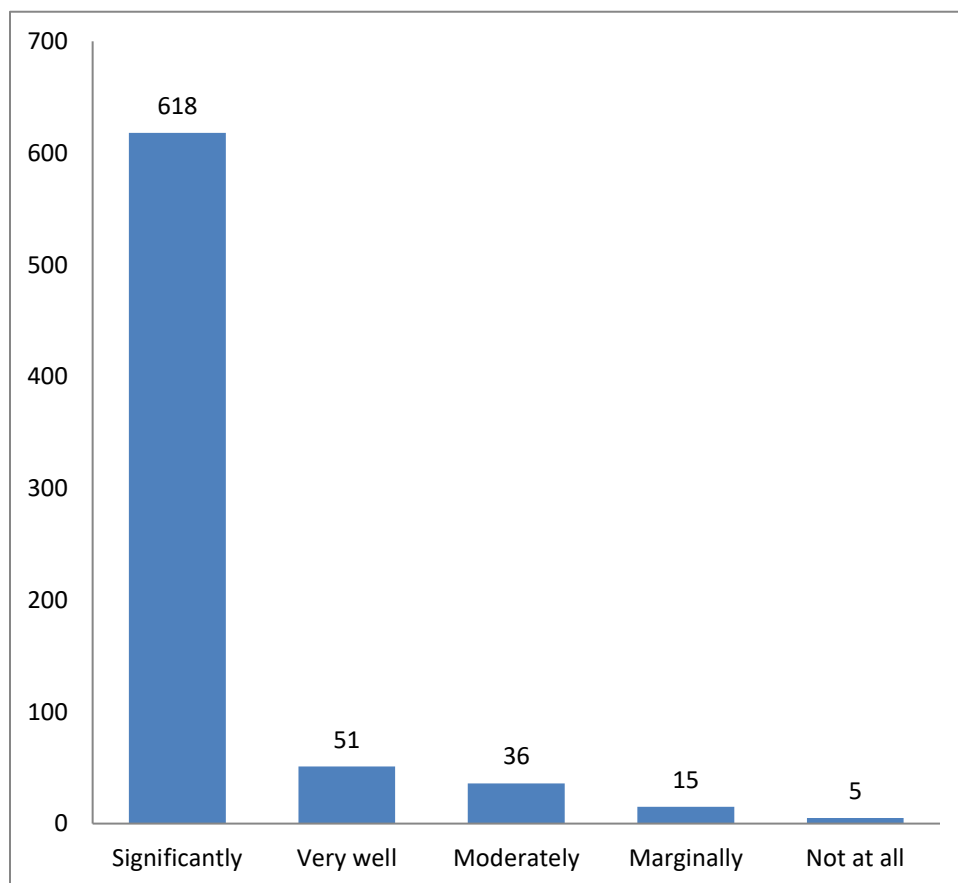
7. The institute takes active interest in promoting internship, student exchange, field visit opportunities for students

S.No	Opinion	No of Respondents
1	Regularly	632
2	Often	61
3	Most of the time	59
4	Sometimes	52
5	Never	22
	Total	826



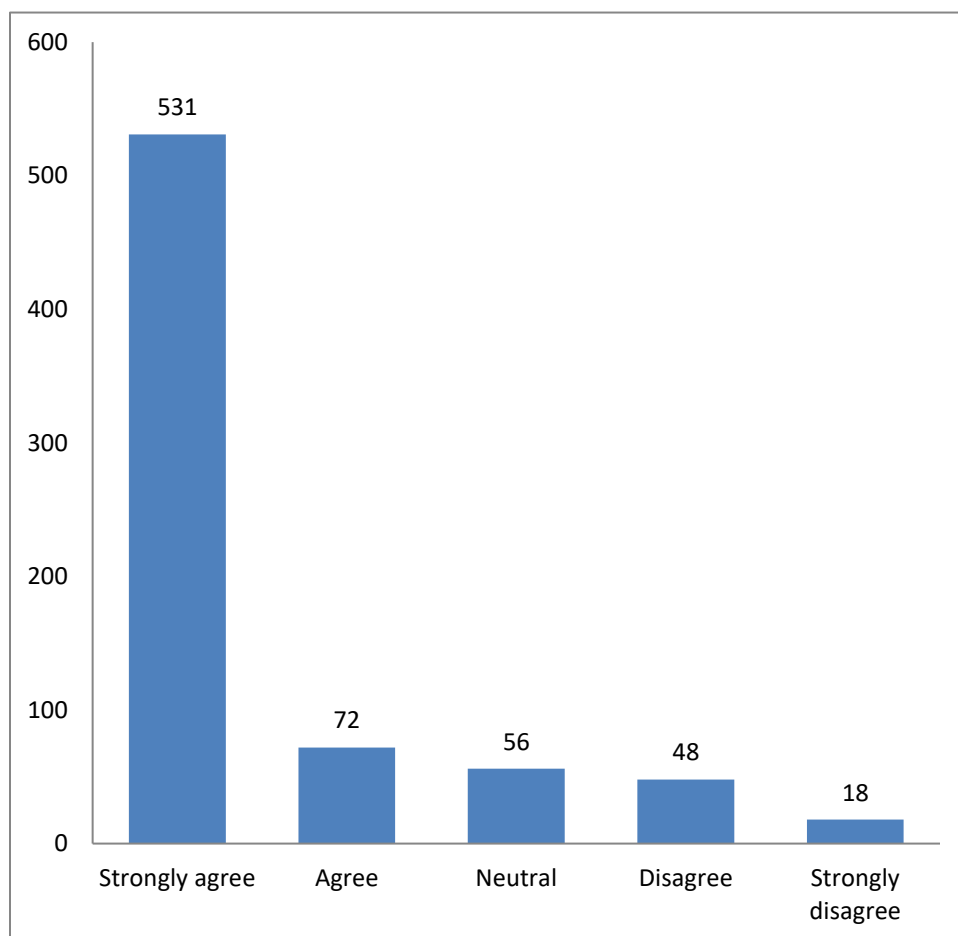
8. The teaching and mentoring process in your institution facilitates you in cognitive, social and emotional growth

S.No	Opinion	No of Respondents
1	Fully agree	435
2	Highly satisfactory	198
3	Satisfactory	76
4	Sometimes	61
5	Needs improvement	56
	Total	826



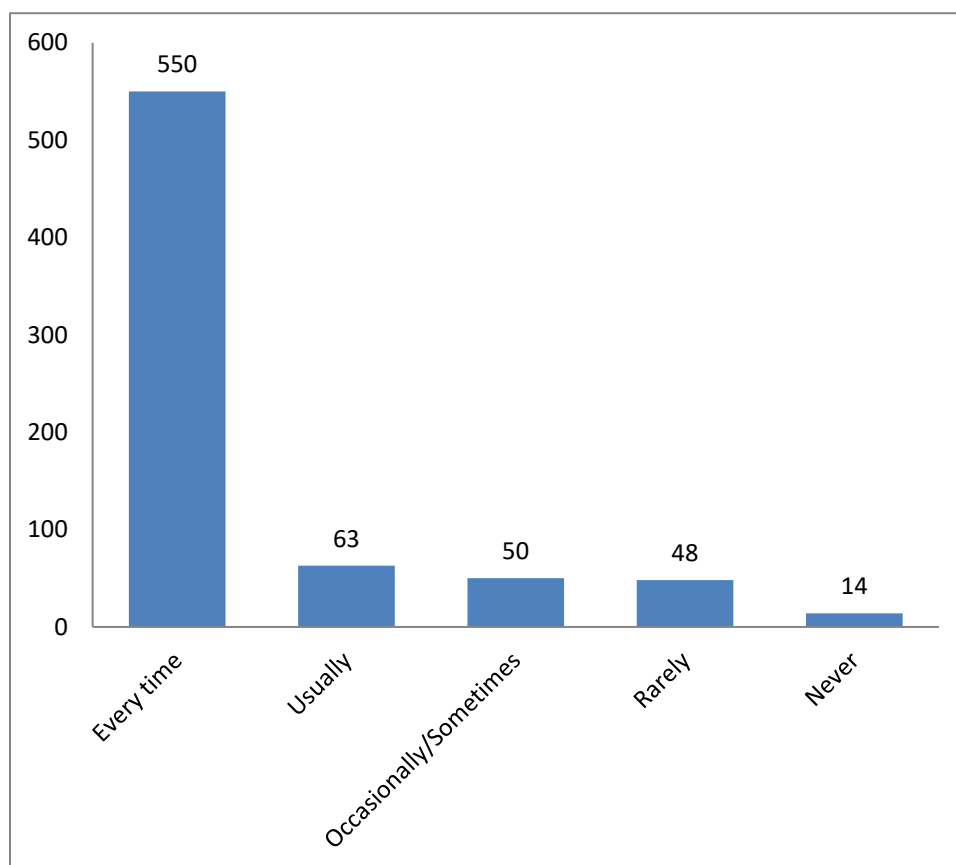
9. The institution is providing multiple opportunities to learn and grow

S.No	Opinion	No of Respondents
1	Very good	542
2	Strongly agree	131
3	Agree	98
4	Neutral	36
5	Disagree	19
	Total	826



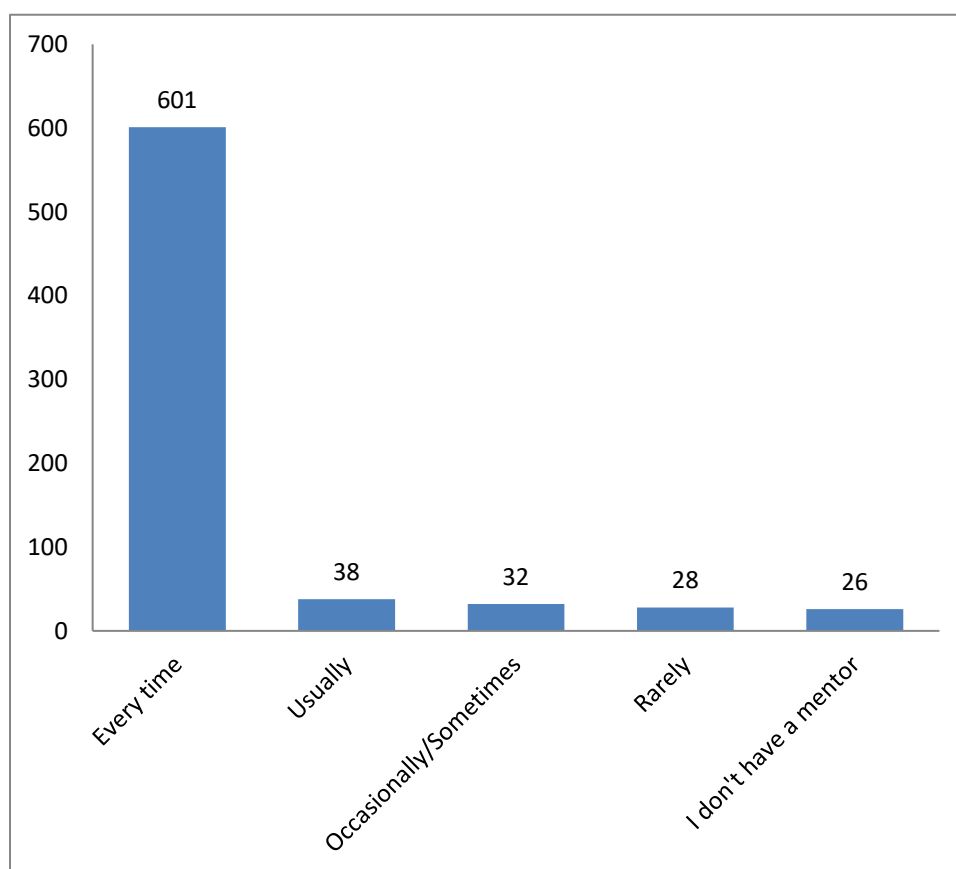
10. Teachers inform you about your expected competencies, course outcomes and programme outcomes

S.No	Opinion	No of Respondents
1	Every time	588
2	As per context	83
3	Occasionally	78
4	Sometimes	56
5	Rarely	21
	Total	826



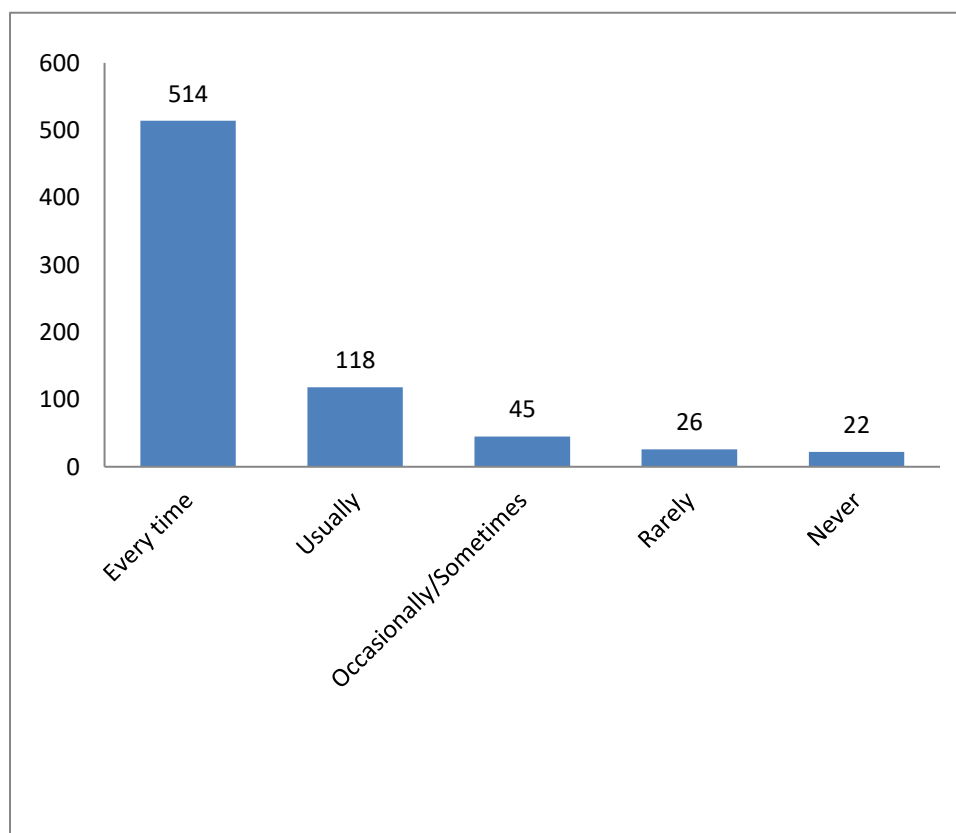
11. Your mentor does a necessary follow-up with an assigned task given to you.

S.No	Opinion	No of Respondents
1	Every time	372
2	On a regular basis	172
3	Occasionally	148
4	Sometimes	86
5	Rarely	48
	Total	826



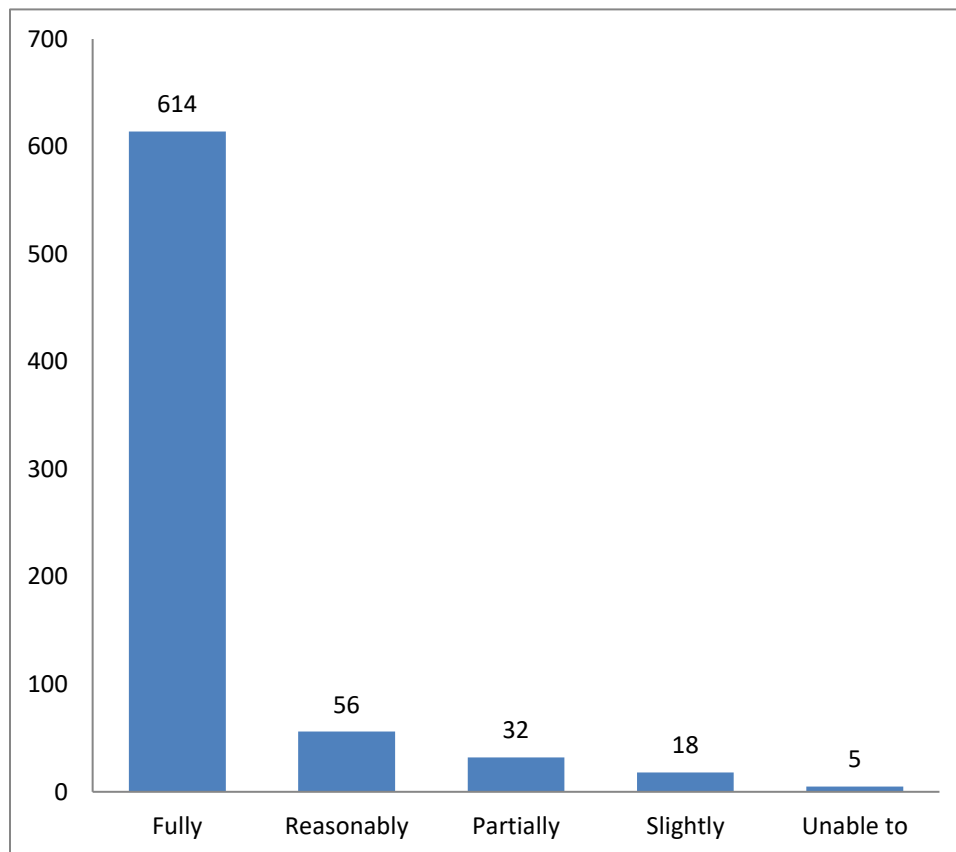
12. The teachers illustrate the concepts through examples and applications

S.No	Opinion	No of Respondents
1	Every time	522
2	Usually	121
3	Sometimes	118
4	Occasionally	46
5	Never	19
	Total	826



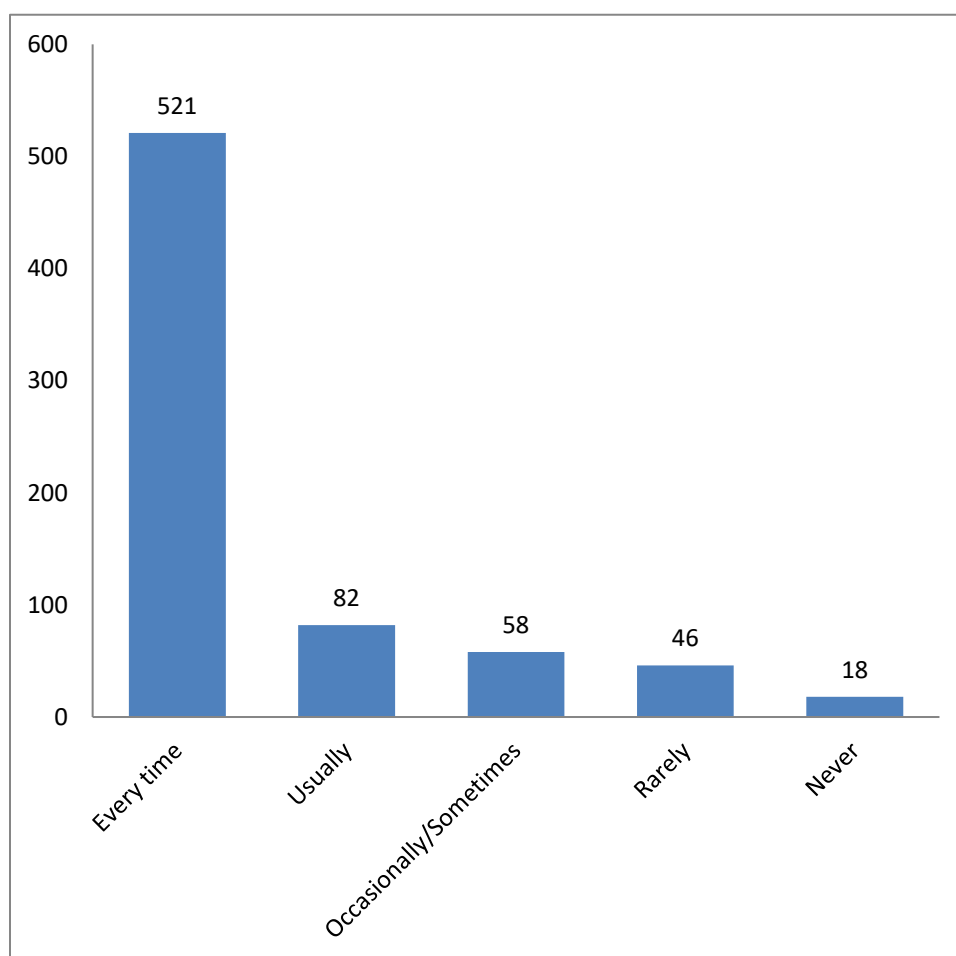
13.The teachers identifying your strengths and encouraging you by providing right level of challenges

S.No	Opinion	No of Respondents
1	Fully	476
2	Reasonably well	178
3	Most of the times	142
4	Slightly	19
5	Never	11
	Total	826



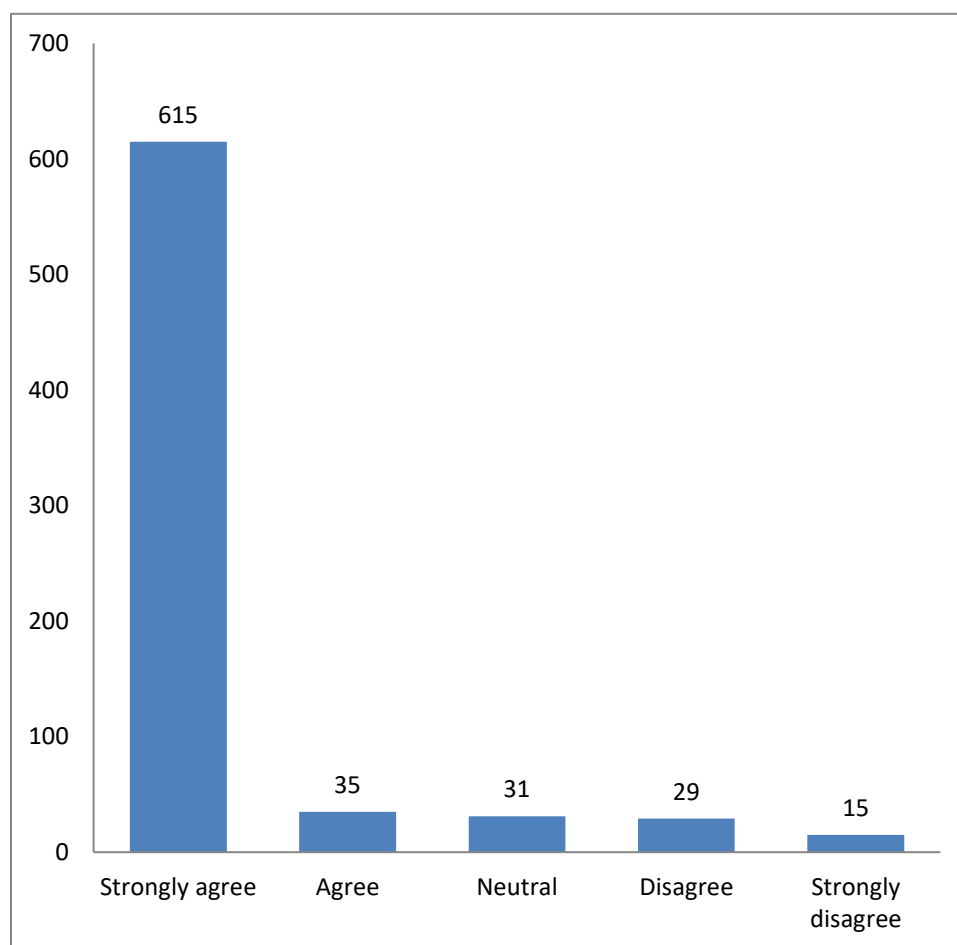
14.The teachers identify your weaknesses and help you to overcome them

S.No	Opinion	No of Respondents
1	Every time	448
2	Usually	196
3	On need basis	78
4	Sometimes	54
5	Never	50
	Total	826



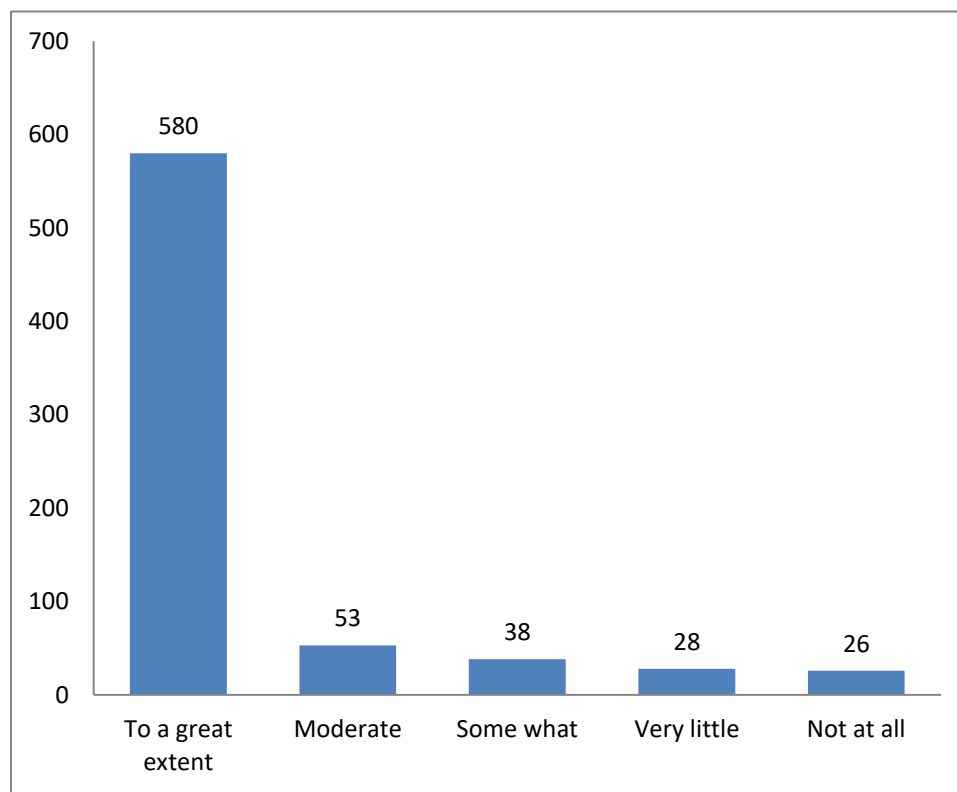
15. The institution makes effort to engage students in the monitoring, review and continuous quality improvement of the teaching learning process

S.No	Opinion	No of Respondents
1	Strongly agree	619
2	Agree	95
3	Satisfactorily	58
4	Needs more attention	43
5	Disagree	11
	Total	826



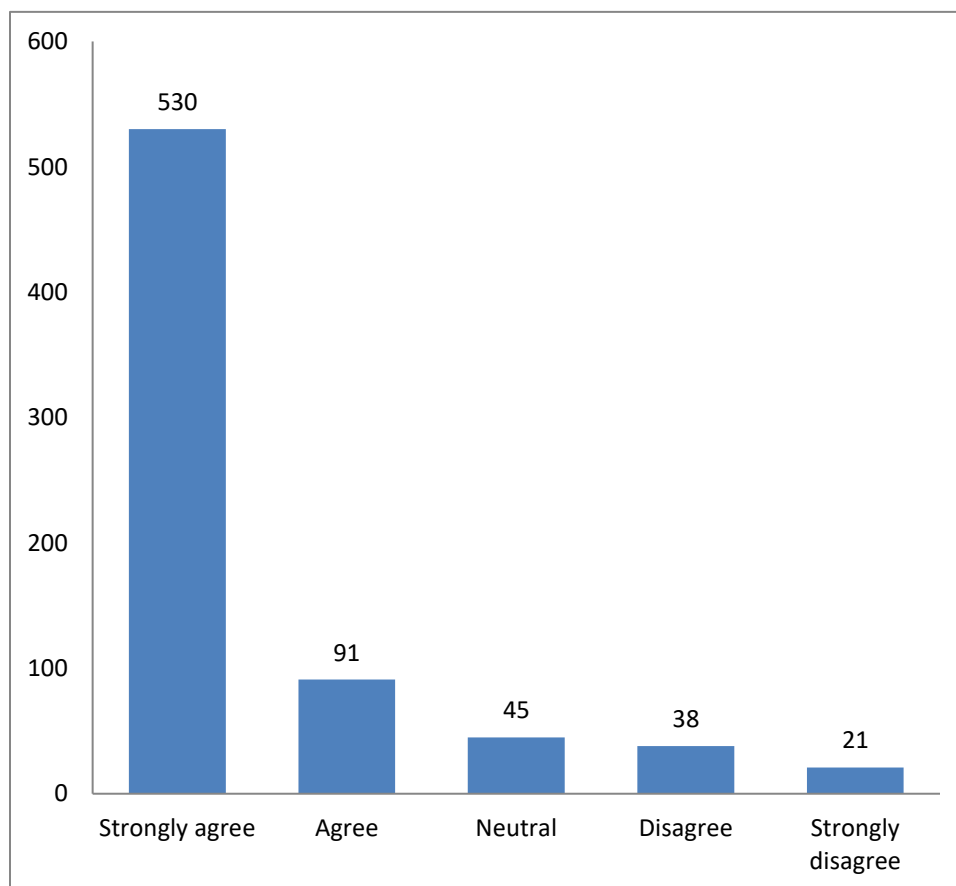
16. The institute/ teachers use student centric methods, such as experiential learning, participative learning and problem solving methodologies for enhancing learning experiences

S.No	Opinion	No of Respondents
1	Always	526
2	To a great extent	92
3	Most of the time	84
4	On need basis	73
5	Not at all	51
	Total	826



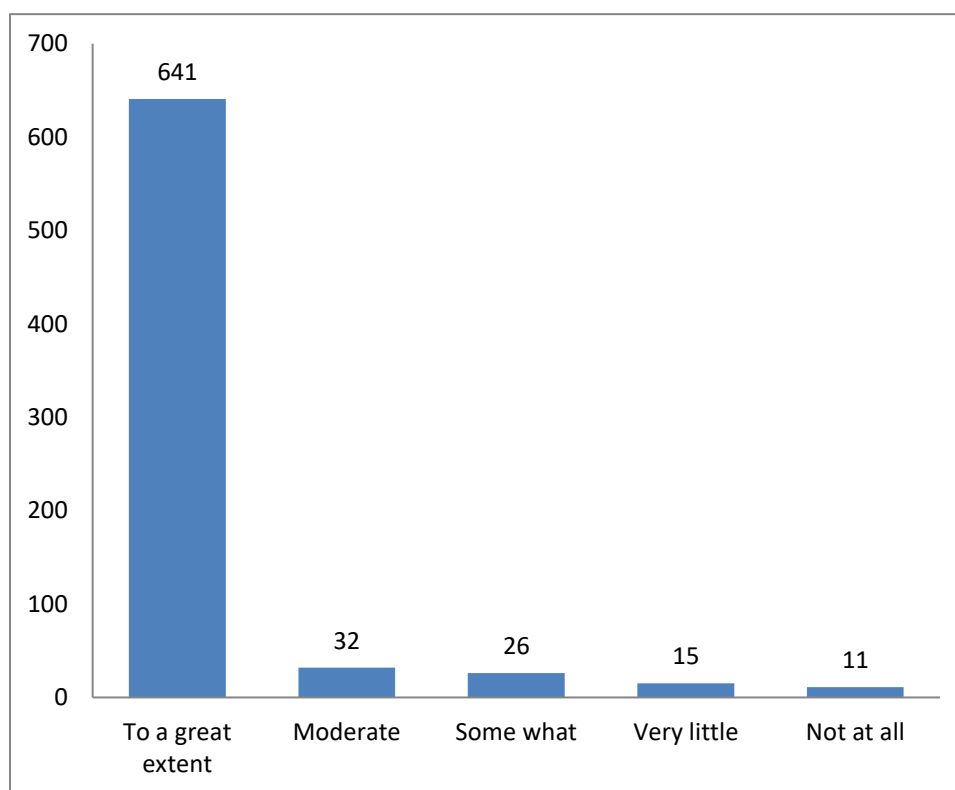
17. Teachers encourage you to participate in extracurricular activities

S.No	Opinion	No of Respondents
1	Strongly agree	621
2	Agree	87
3	Neutral	62
4	Disagree	35
5	Strongly disagree	21
	Total	826



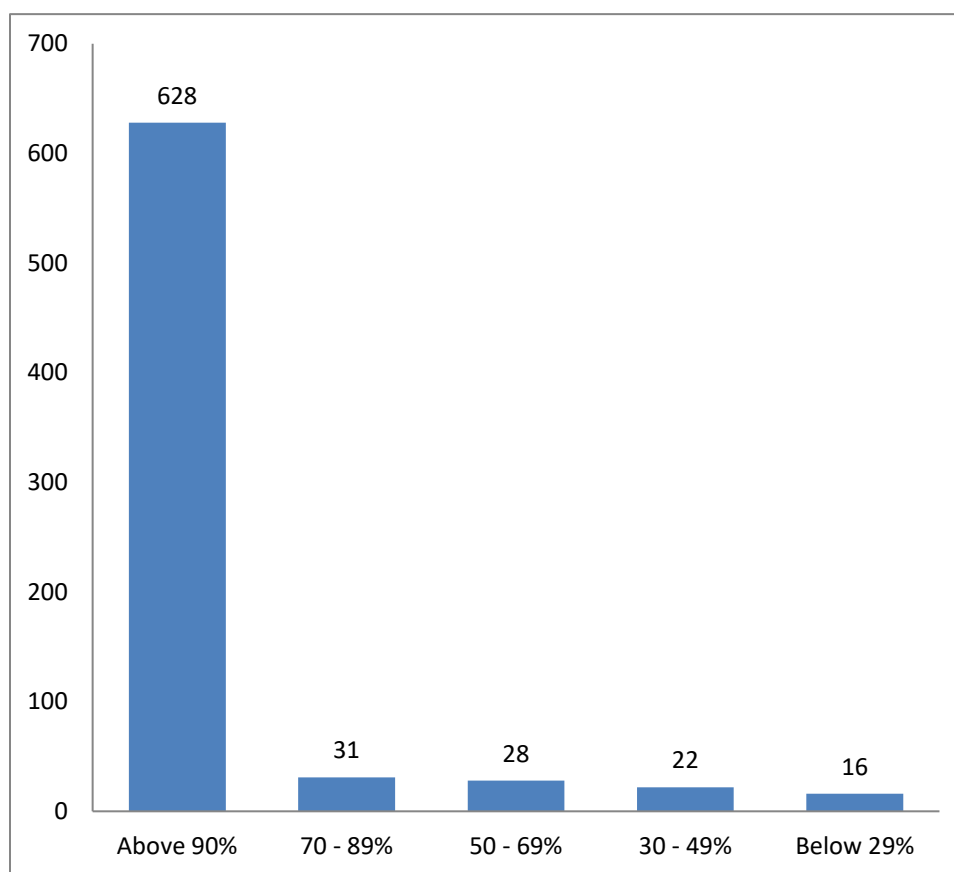
18. The efforts are made by the institute/ teachers to inculcate soft skills, life skills and employability skills to make you ready for the world of work

S.No	Opinion	No of Respondents
1	Fully agree	574
2	Agree	95
3	To some extent	78
4	Very moderate	45
5	Not at all	34
	Total	826



19. What percentage of teachers use ICT Tools such as LCD Projector, Multimedia, etc. while teaching?

S.No	Opinion	No of Respondents
1	Above 90%	410
2	70 - 89%	180
3	50 - 69%	92
4	30 - 49%	83
5	Below 29%	61
	Total	826



20. The overall quality of teaching-learning process in your institute is verygood

S.No	Opinion	No of Respondents
1	Strongly agree	538
2	Agree	96
3	Satisfactorily	88
4	Neutral	54
5	Disagree	50
	Total	826

