

STUDENT SATISFACTION SURVEY REPORT, 2018-2019

ABOUT THE SURVEY:

The students of an institution are the core stakeholders and every activity undertaken by the institute is focused on creating a barrier free and favorable environment to help them excel in their academics. This survey is modeled on the questionnaire recommended by NAAC. The questionnaire asks for feedback on a range of topics, including the classroom experience, the performance of administrative functions, and the quality of extracurricularthe institution offers. An online student satisfaction survey can be delivered in a variety of ways, but email is often the most effective method.

GUIDELINES FOR STUDENTS:

- A student will have to respond to all the questions compulsorily with sincere effort and thought.
- Student identity will not be revealed.
- This survey is being conducted by A.N.R College, Gudivada with the aim to upgrade the quality in higher education.
- Each question has five options and the students are required to choose the most appropriate one.
- Students are required to give answers for the following questions:
 1. Please confirm this is the first and only time you answer this survey.
a) Yes b) No
 2. Age:
 3. Branch /Department:
 4. Gender:
a) Female b) Male c) Transgender
 5. What degree/program are you pursuing now?
a) Bachelors b) Masters

SURVEY PROCESS:

- The survey is conducted and reported by Internal Quality Assurance Cell (IQAC) with the support of Heads and Coordinators of all the Departments. The Questioners were prepared in the form of Google Form and circulated to all the Departments and then to Students through Coordinators.
- The feedback was taken on different attributes like; Basic Facilities, Basic Services, Co-curricular and Extracurricular Activities. The responses obtained on these dimensions are compiled into a Spread Sheet, analyzed and Logical Conclusions are drawn therefrom.
- The Questionnaire consisting of 21 questions is shared with the students and their responses are noted and analyzed graphically in terms of percentage. After analysis, results are analyzed by IQAC Team.
- The results of the survey will help the institution to understand both short term and long term needs of the students and initiate remedial action to improve the facilities wherever it is required. The outcome of this survey will provide a base for planning for the future.
- The IQAC sincerely thanks all the members of the Management, Principal, and Heads of the Departments & Staff, Coordinators of the Departments for permissions and implementation of the survey. IQAC conveys thanks to the students who have expressed their opinions and/or views sincerely.

QUESTIONS ASKED IN QUESTIONNAIRE:

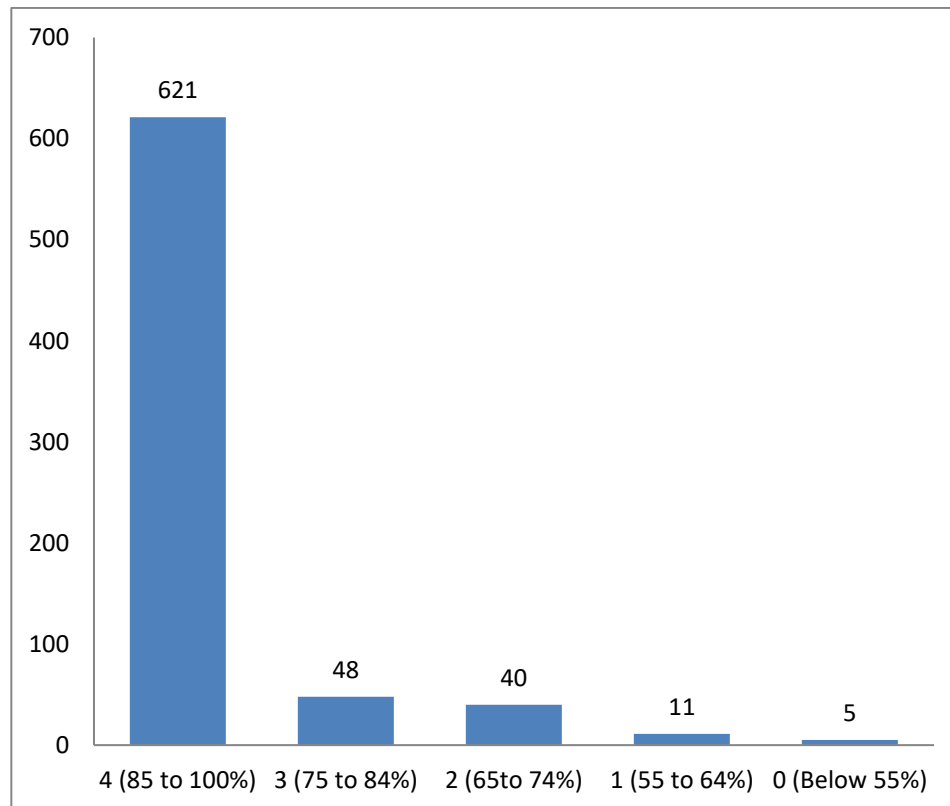
1. How much of the syllabus was covered in the class?
2. How well did the teachers prepare for the classes?
3. How well were the teachers able to communicate?
4. The Teacher's approach to teaching can best be described as
5. Fairness of the internal evaluation process by the teachers.

6. Was your performance in assignments discussed with you?
7. The institute takes active interest in promoting internship, student exchange, field visit opportunities for students.
8. The teaching and mentoring process in your institution facilitates you in cognitive, social and emotional growth.
9. The institution is providing multiple opportunities to learn and grow.
10. Teachers inform you about your expected competencies, course outcomes and programme outcomes.
11. Your mentor does a necessary follow-up with an assigned task given to you.
12. The teachers illustrate the concepts through examples and applications.
13. The teachers identify your strengths and encourage you by providing right level of challenges.
14. The teachers identify your weaknesses and help you to overcome them.
15. The institution makes effort to engage students in the monitoring, review and continuous quality improvement of the teaching learning process.
16. The institute/ teachers use student centric methods, such as experiential learning, participative learning and problem-solving methodologies for enhancing learning experiences.
17. Teachers encourage you to participate in extracurricular activities.
18. The efforts are made by the institute/ teachers to inculcate soft skills, life skills and employability skills to make you ready for the world of work.
19. What percentage of teachers use ICT Tools such as LCD Projector, Multimedia, etc. while teaching?
20. The overall quality of teaching-learning process in your institute is very good.
21. Give three observations/ suggestions to improve the overall teaching-learning experience in the class with reference to the teacher.

ANALYSIS OF QUESTIONNAIRE:

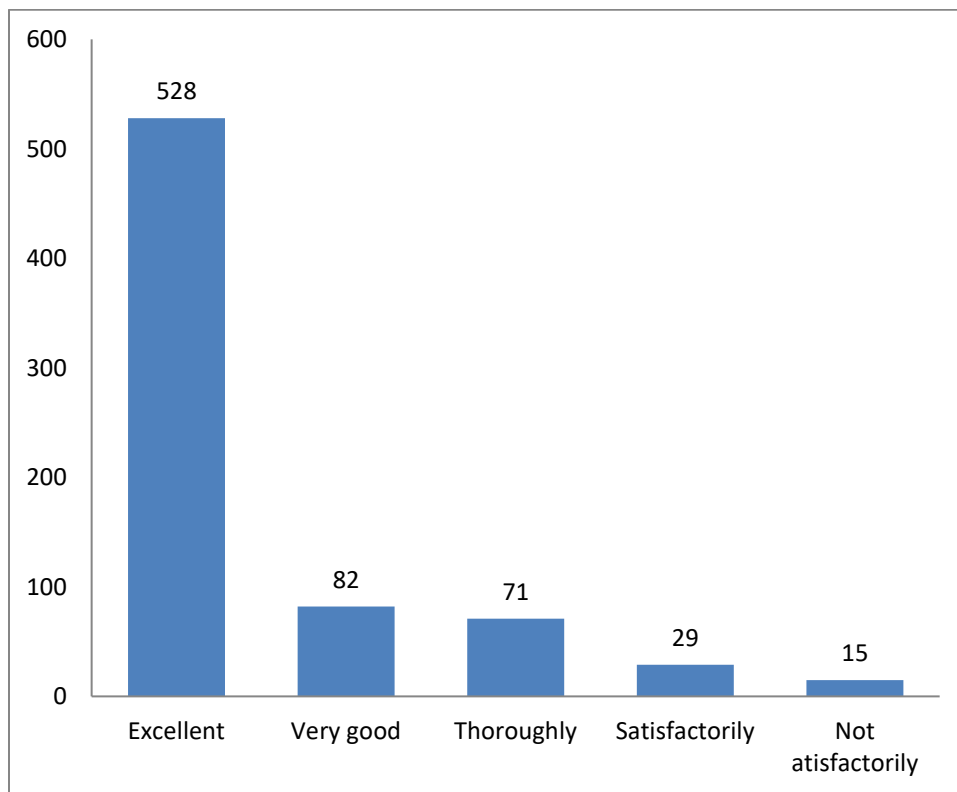
1. How much of the syllabus was covered in the class?

S.No	Opinion	No of Respondents
1	4 (85 to 100%)	621
2	3 (75 to 84%)	48
3	2 (65to 74%)	40
4	1 (55 to 64%)	11
5	0 (Below 55%)	5
	Total	725



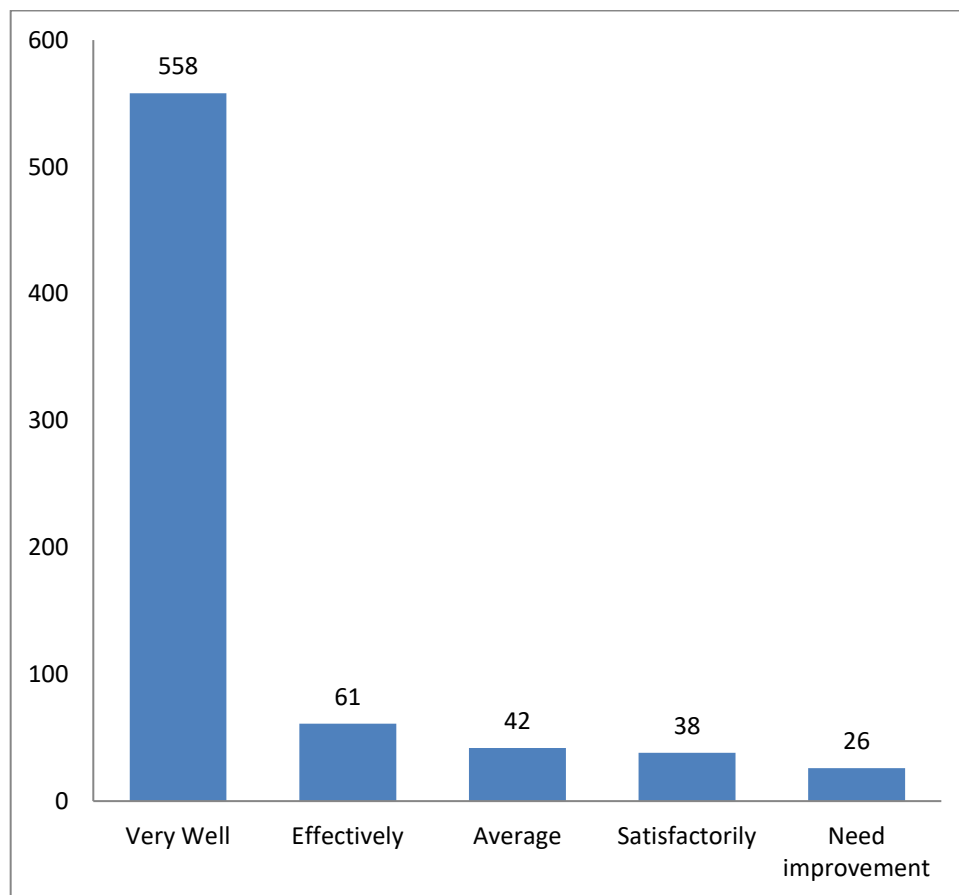
2. How well did the teachers prepare for the classes?

S.No	Opinion	No of Respondents
1	Excellent	528
2	Very good	82
3	Thoroughly	71
4	Satisfactorily	29
5	Not atisfactorily	15
	Total	725



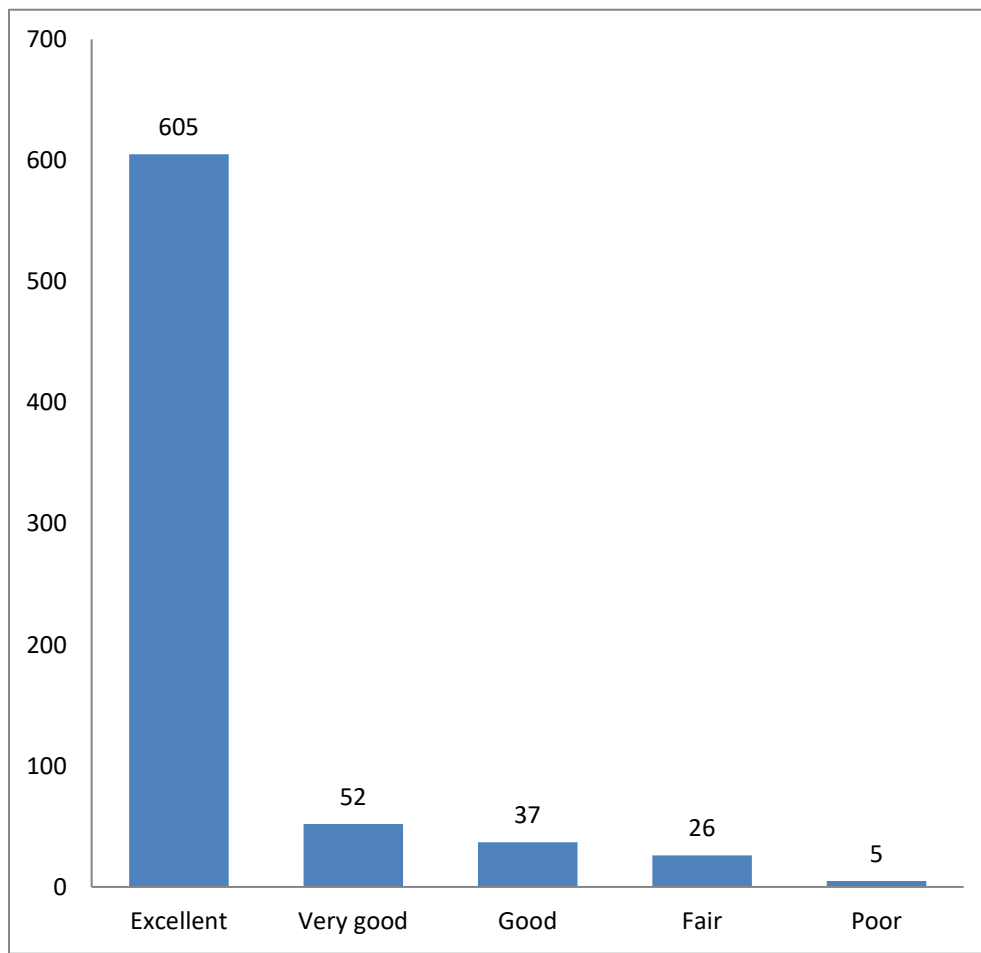
3. How well were the teachers able to communicate?

S.No	Opinion	No of Respondents
1	Very Well	558
2	Effectively	61
3	Average	42
4	Satisfactorily	38
5	Need improvement	26
	Total	725



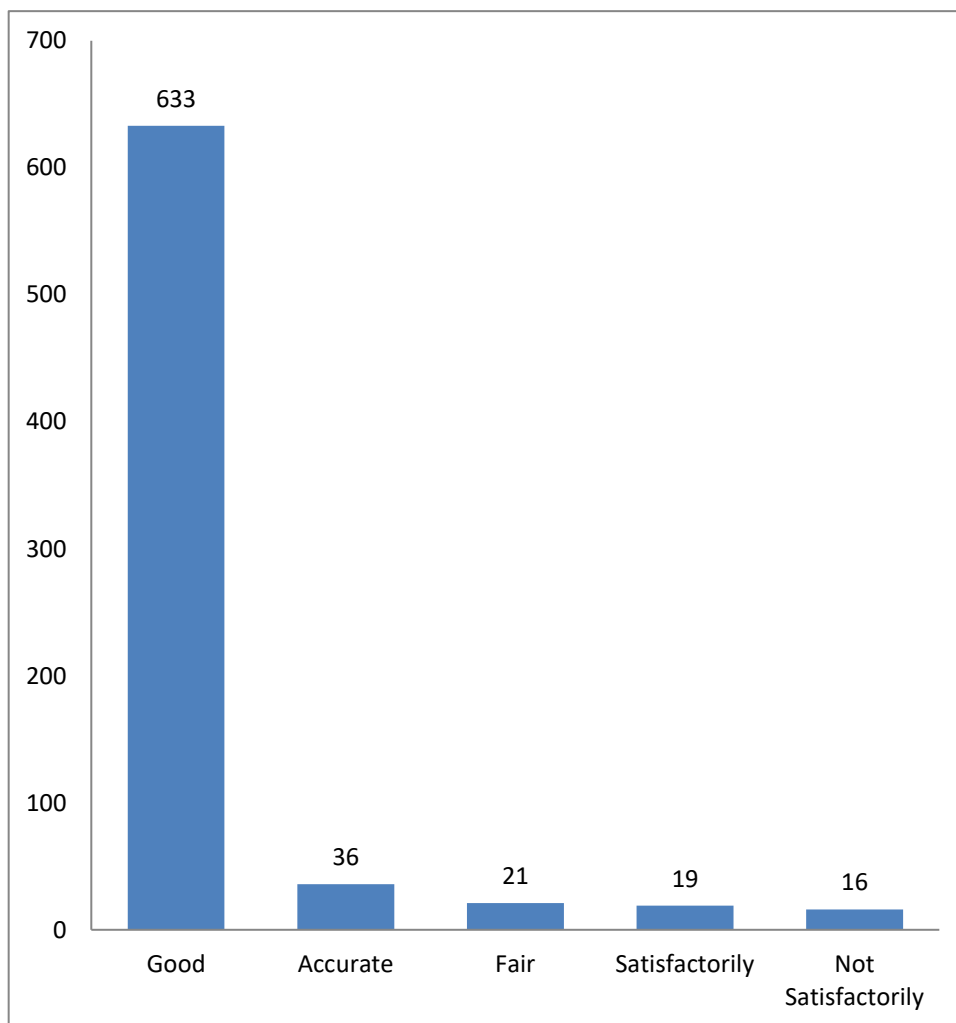
4. The Teacher's approach to teaching can best be described as

S.No	Opinion	No of Respondents
1	Excellent	605
2	Very good	52
3	Good	37
4	Fair	26
5	Poor	5
	Total	725



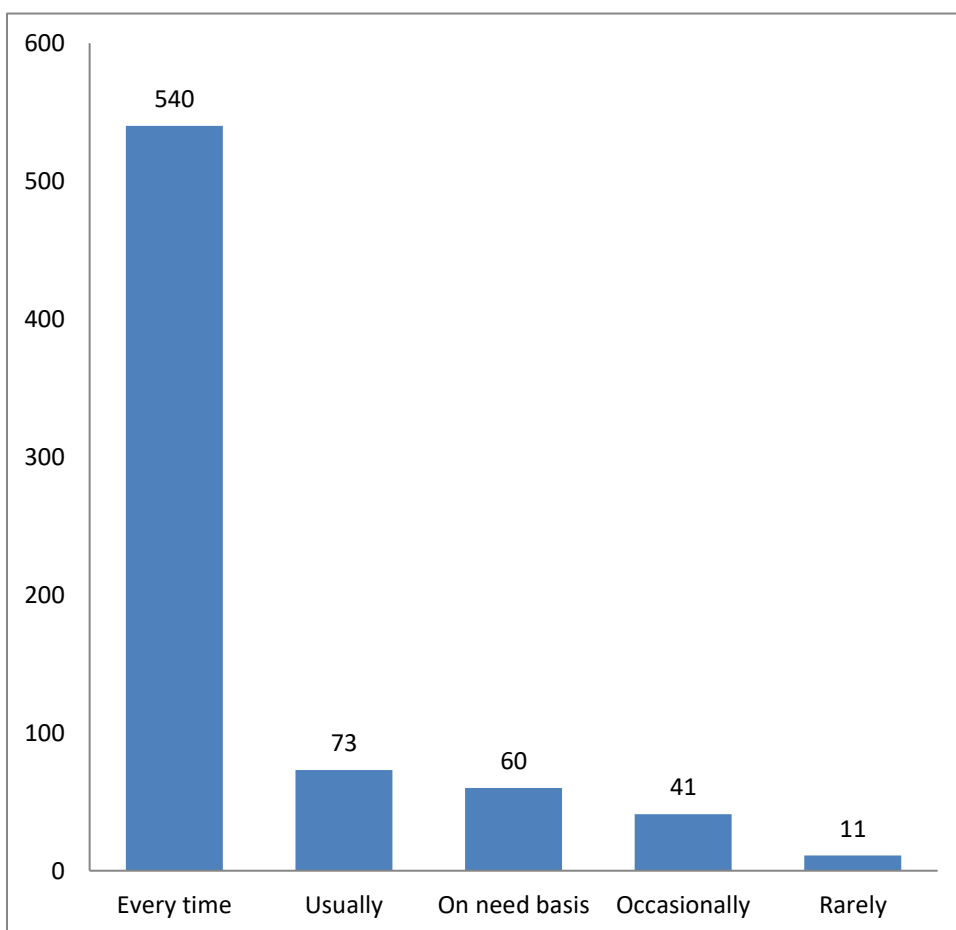
5. Fairness of the internal evaluation process by the teachers

S.No	Opinion	No of Respondents
1	Good	633
2	Accurate	36
3	Fair	21
4	Satisfactorily	19
5	Not Satisfactorily	16
	Total	725



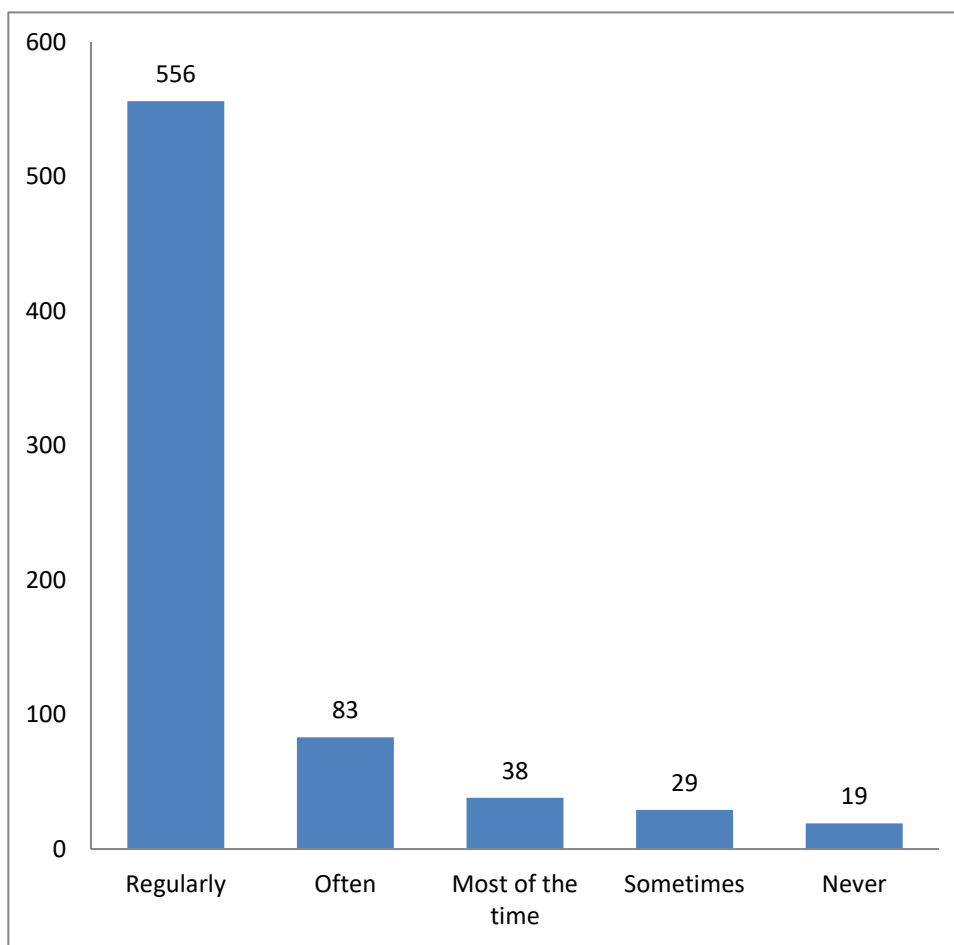
6. Was your performance in assignments discussed with you?

S.No	Opinion	No of Respondents
1	Every time	540
2	Usually	73
3	On need basis	60
4	Occasionally	41
5	Rarely	11
	Total	725



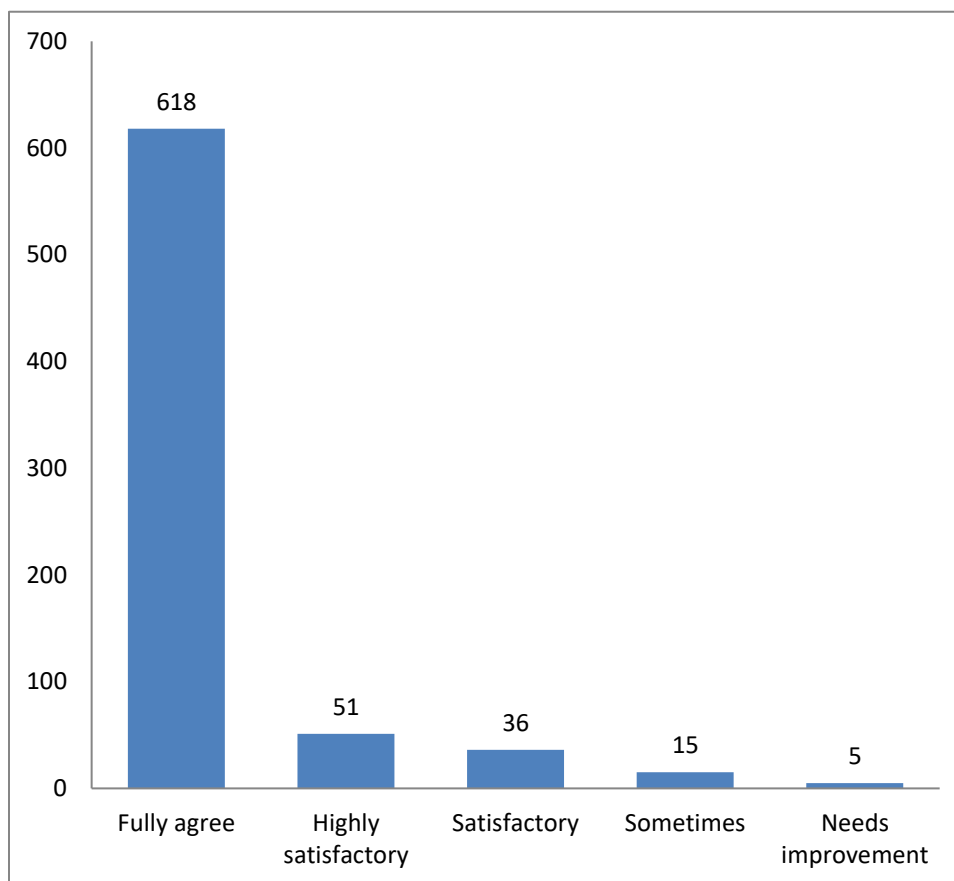
7. The institute takes active interest in promoting internship, student exchange, field visit opportunities for students

S.No	Opinion	No of Respondents
1	Regularly	556
2	Often	83
3	Most of the time	38
4	Sometimes	29
5	Never	19
	Total	725



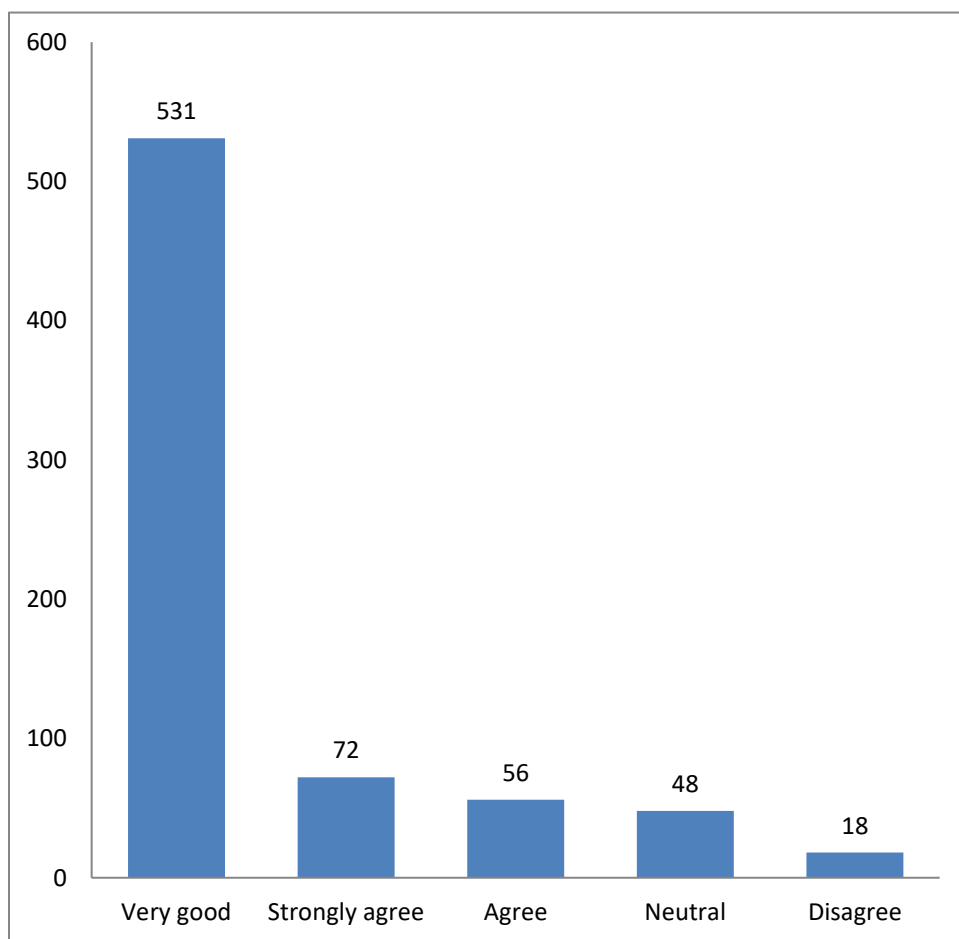
8. The teaching and mentoring process in your institution facilitates you in cognitive, social and emotional growth

S.No	Opinion	No of Respondents
1	Fully agree	618
2	Highly satisfactory	51
3	Satisfactory	36
4	Sometimes	15
5	Needs improvement	5
	Total	725



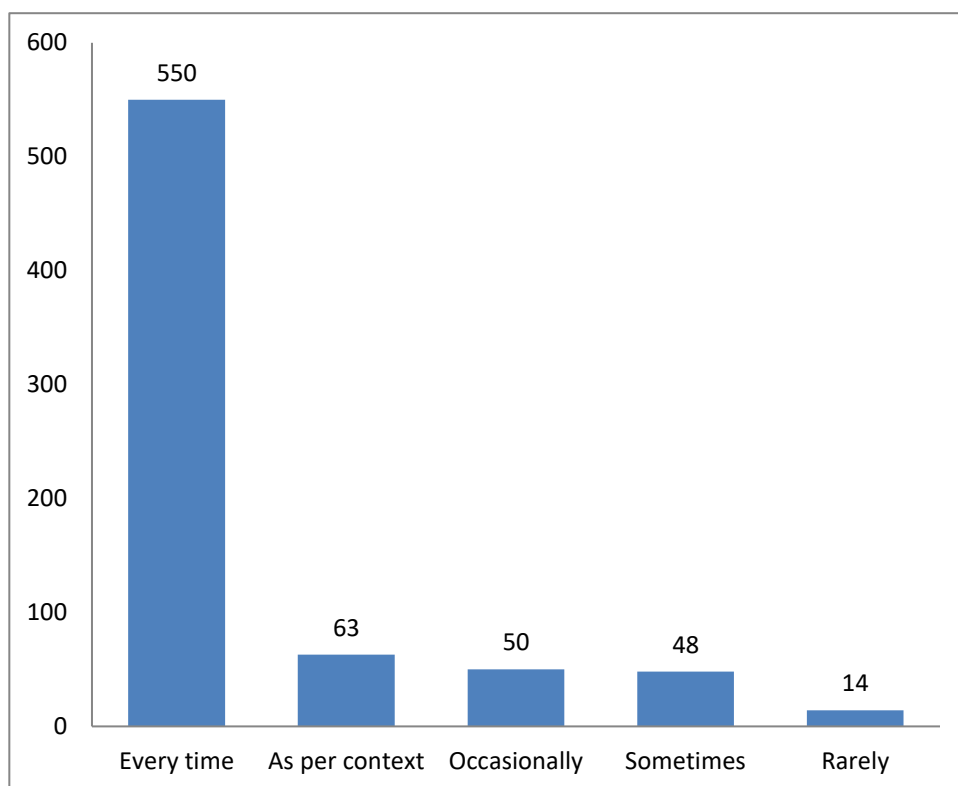
9. The institution is providing multiple opportunities to learn and grow

S.No	Opinion	No of Respondents
1	Very good	531
2	Strongly agree	72
3	Agree	56
4	Neutral	48
5	Disagree	18
	Total	725



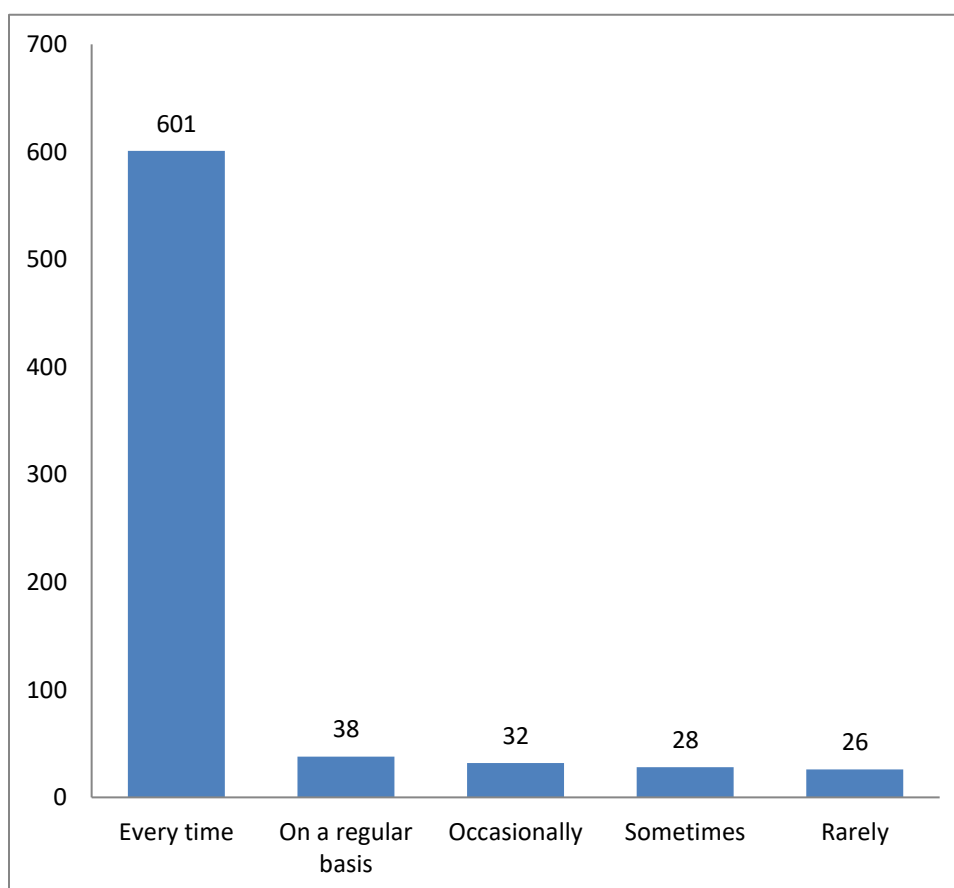
10. Teachers inform you about your expected competencies, course outcomes and programme outcomes

S.No	Opinion	No of Respondents
1	Every time	550
2	As per context	63
3	Occasionally	50
4	Sometimes	48
5	Rarely	14
	Total	725



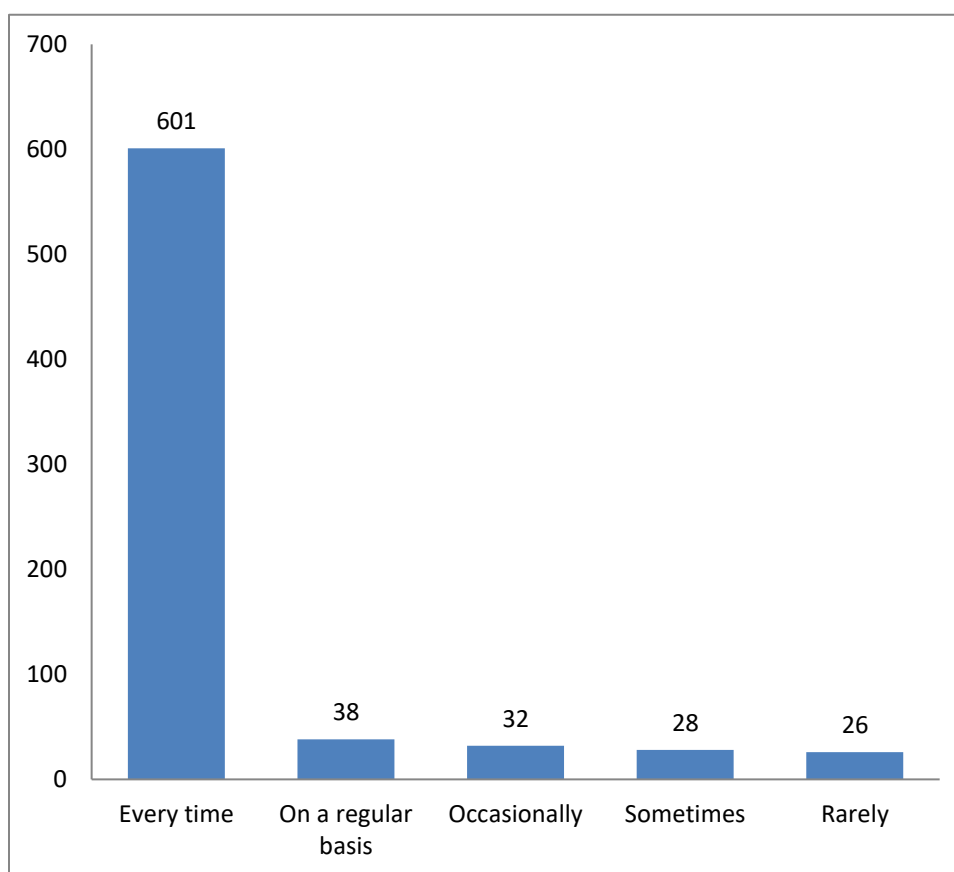
11. Your mentor does a necessary follow-up with an assigned task given to you.

S.No	Opinion	No of Respondents
1	Every time	601
2	On a regular basis	38
3	Occasionally	32
4	Sometimes	28
5	Rarely	26
	Total	725



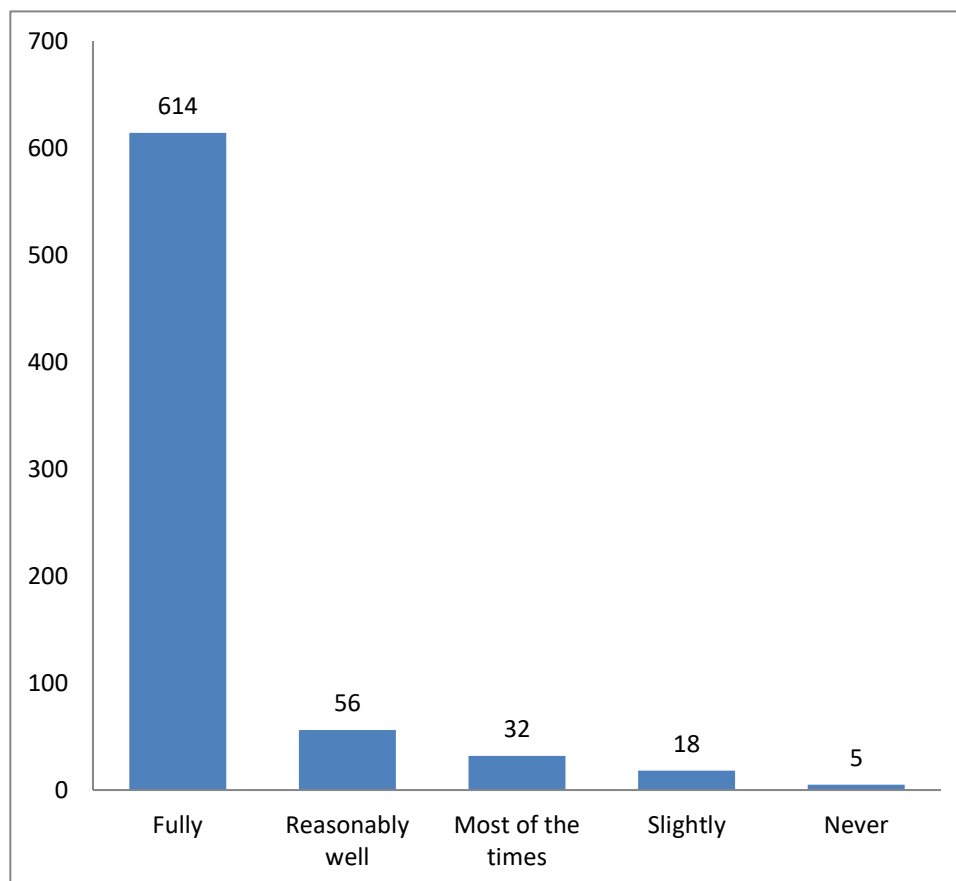
12. The teachers illustrate the concepts through examples and applications

S.No	Opinion	No of Respondents
1	Every time	514
2	Usually	118
3	Sometimes	45
4	Occasionally	26
5	Never	22
	Total	725



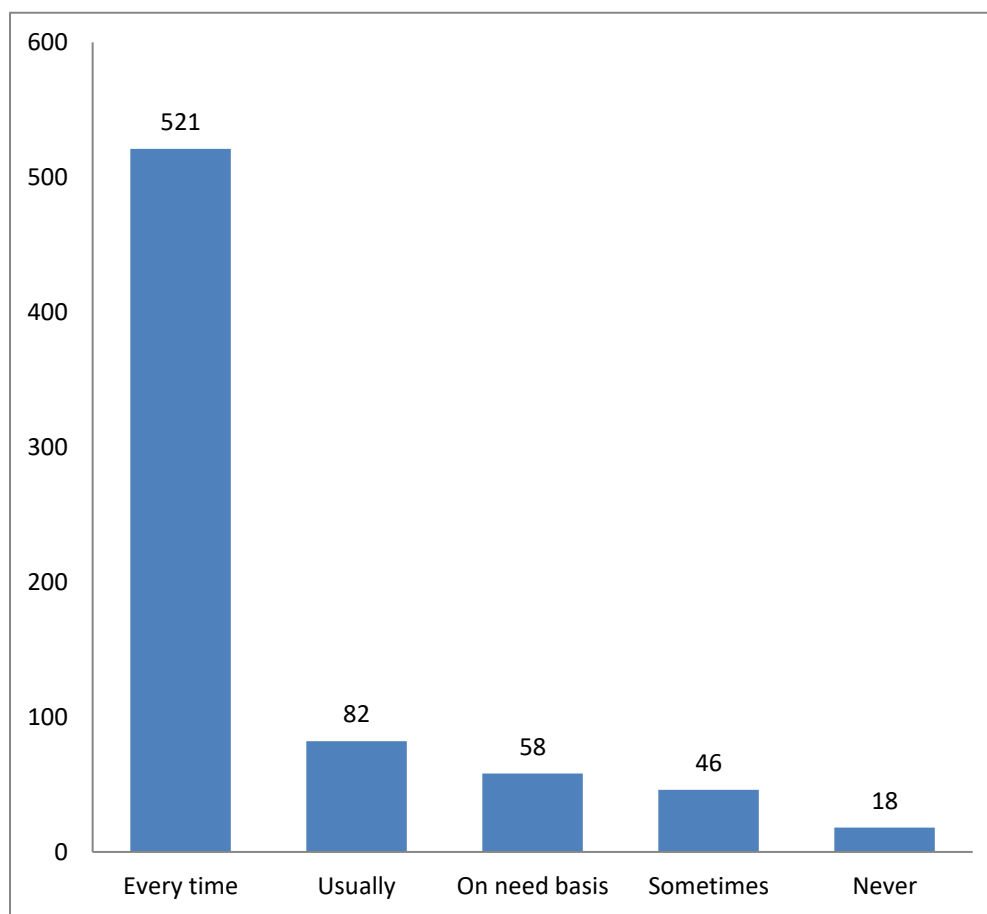
13.The teachers identifying your strengths and encouraging you by providing right level of challenges

S.No	Opinion	No of Respondents
1	Fully	614
2	Reasonably well	56
3	Most of the times	32
4	Slightly	18
5	Never	5
	Total	725



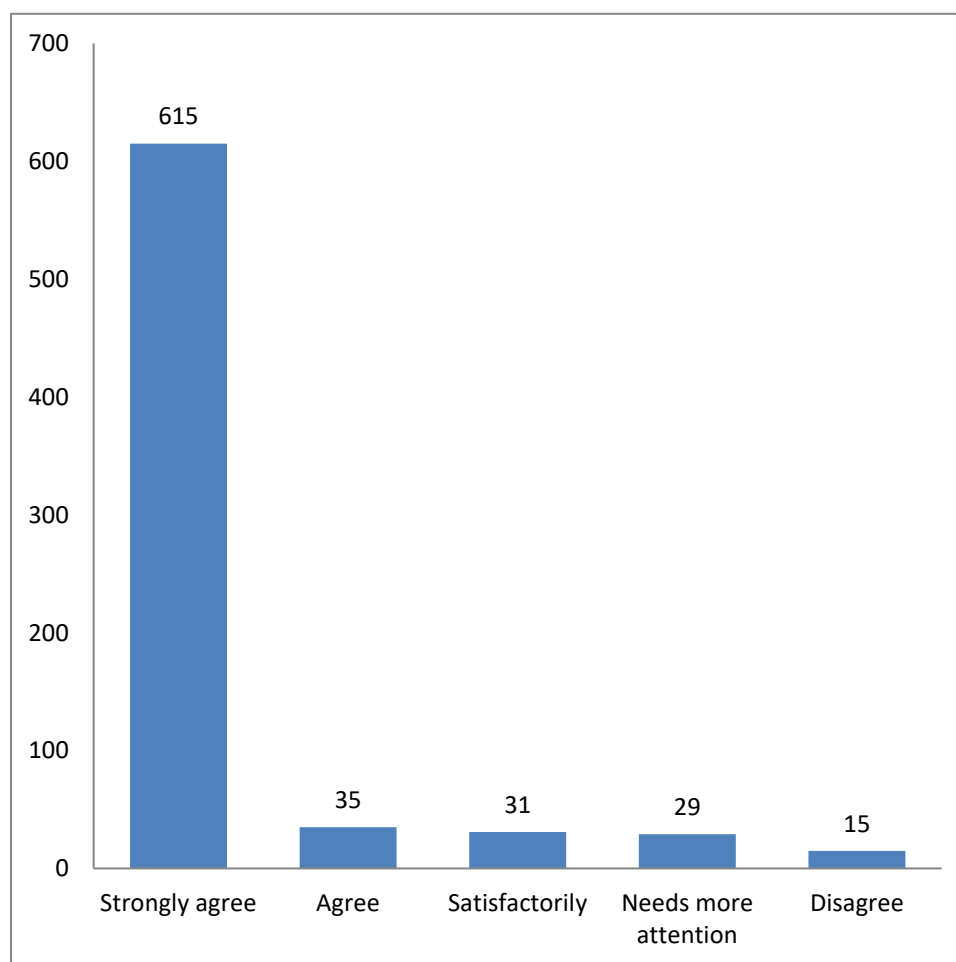
14.The teachers identify your weaknesses and help you to overcome them

S.No	Opinion	No of Respondents
1	Every time	521
2	Usually	82
3	On need basis	58
4	Sometimes	46
5	Never	18
	Total	725



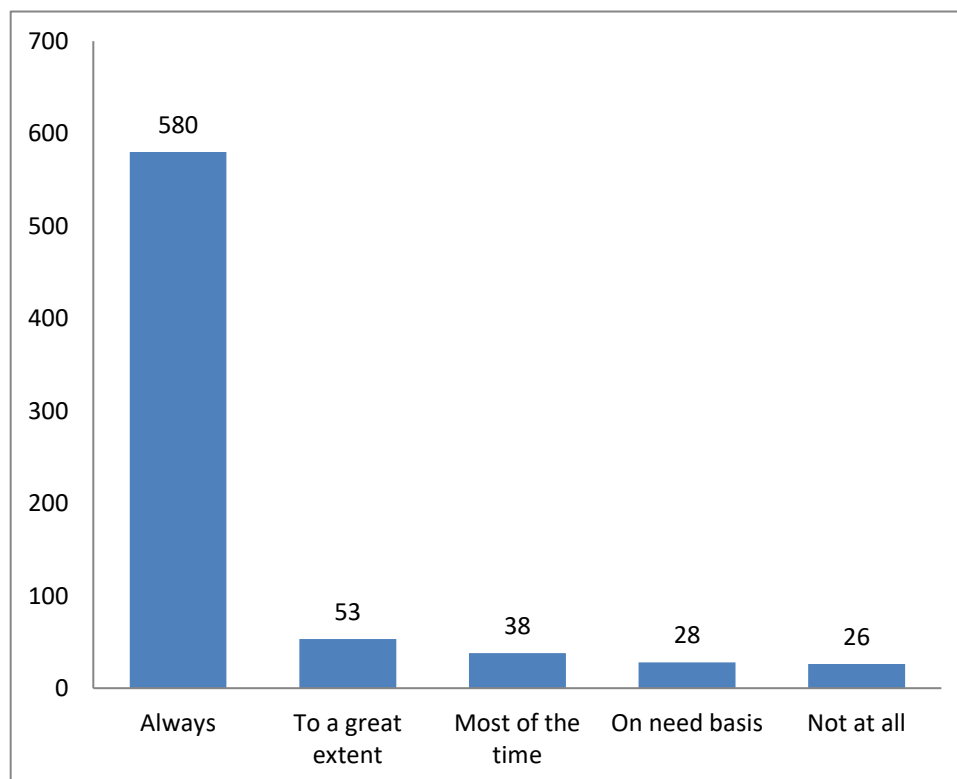
15. The institution makes effort to engage students in the monitoring, review and continuous quality improvement of the teaching learning process

S.No	Opinion	No of Respondents
1	Strongly agree	615
2	Agree	35
3	Satisfactorily	31
4	Needs more attention	29
5	Disagree	15
	Total	725



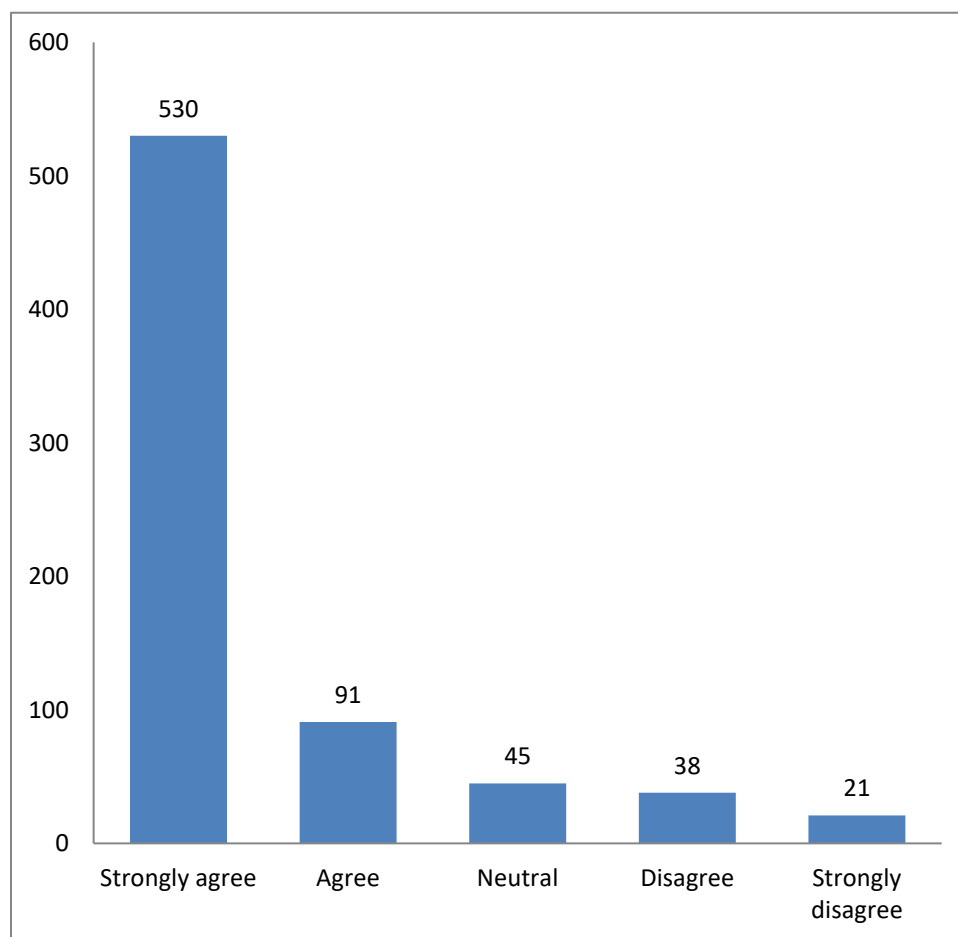
16. The institute/ teachers use student centric methods, such as experiential learning, participative learning and problem solving methodologies for enhancing learning experiences

S.No	Opinion	No of Respondents
1	Always	580
2	To a great extent	53
3	Most of the time	38
4	On need basis	28
5	Not at all	26
	Total	725



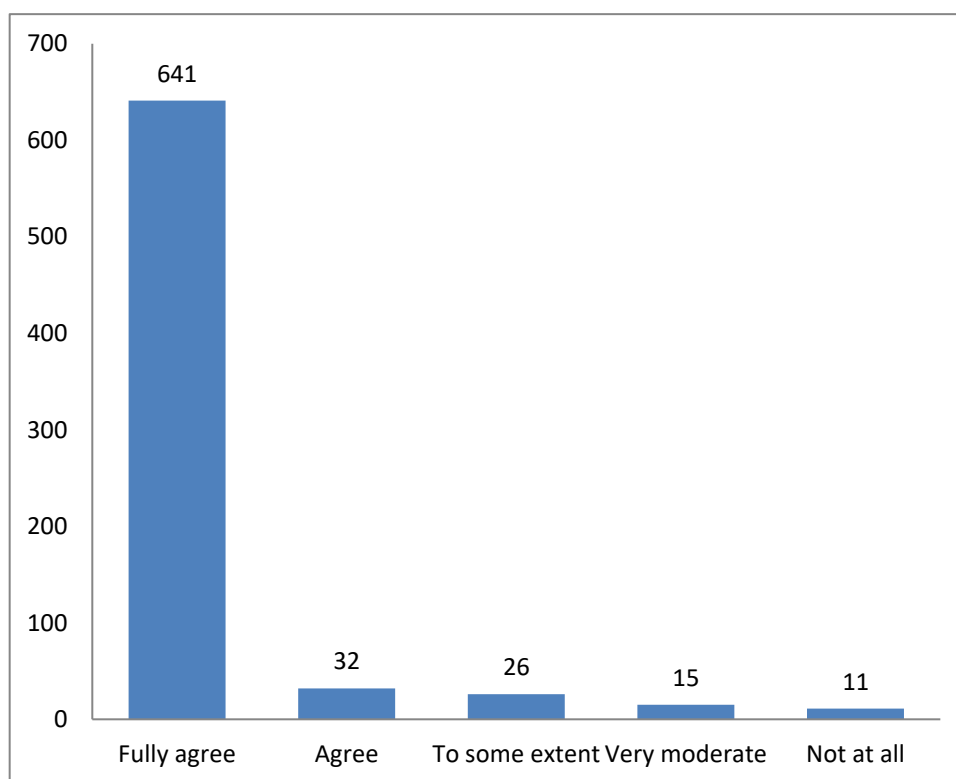
17. Teachers encourage you to participate in extracurricular activities

S.No	Opinion	No of Respondents
1	Strongly agree	530
2	Agree	91
3	Neutral	45
4	Disagree	38
5	Strongly disagree	21
	Total	725



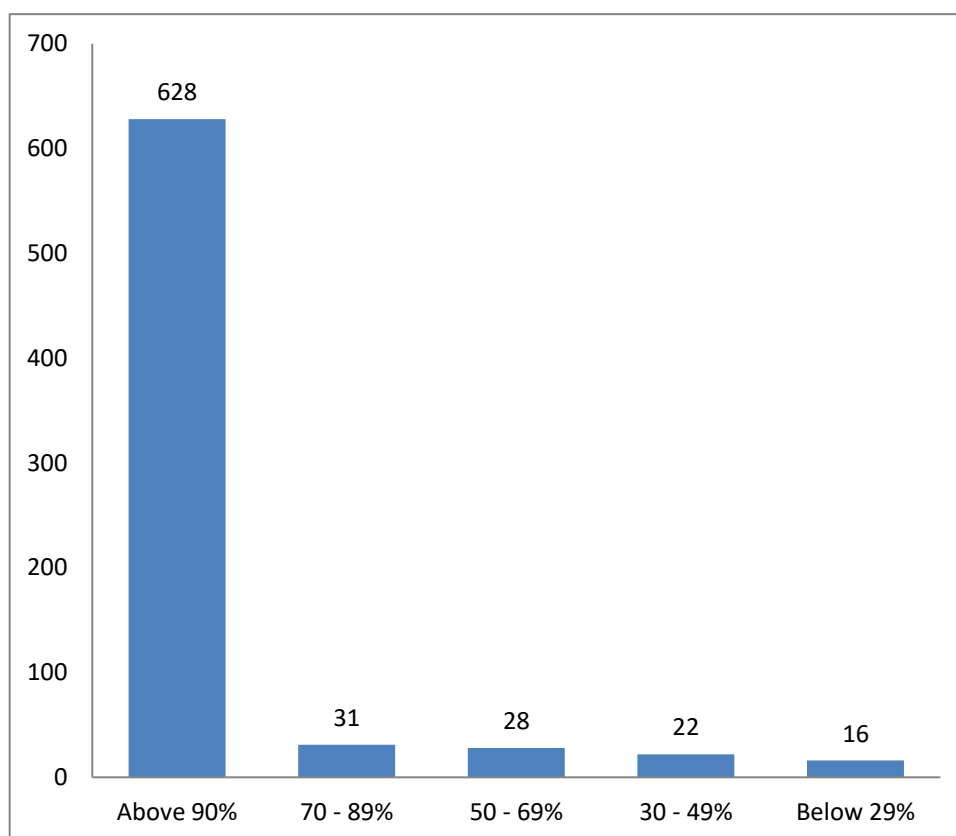
18. The efforts are made by the institute/ teachers to inculcate soft skills, life skills and employability skills to make you ready for the world of work

S.No	Opinion	No of Respondents
1	Fully agree	641
2	Agree	32
3	To some extent	26
4	Very moderate	15
5	Not at all	11
	Total	725



19. What percentage of teachers use ICT Tools such as LCD Projector, Multimedia, etc. while teaching?

S.No	Opinion	No of Respondents
1	Above 90%	628
2	70 - 89%	31
3	50 - 69%	28
4	30 - 49%	22
5	Below 29%	16
	Total	725



20. The overall quality of teaching-learning process in your institute is verygood

S.No	Opinion	No of Respondents
1	Strongly agree	552
2	Agree	75
3	Satisfactorily	39
4	Neutral	31
5	Disagree	28
	Total	725

